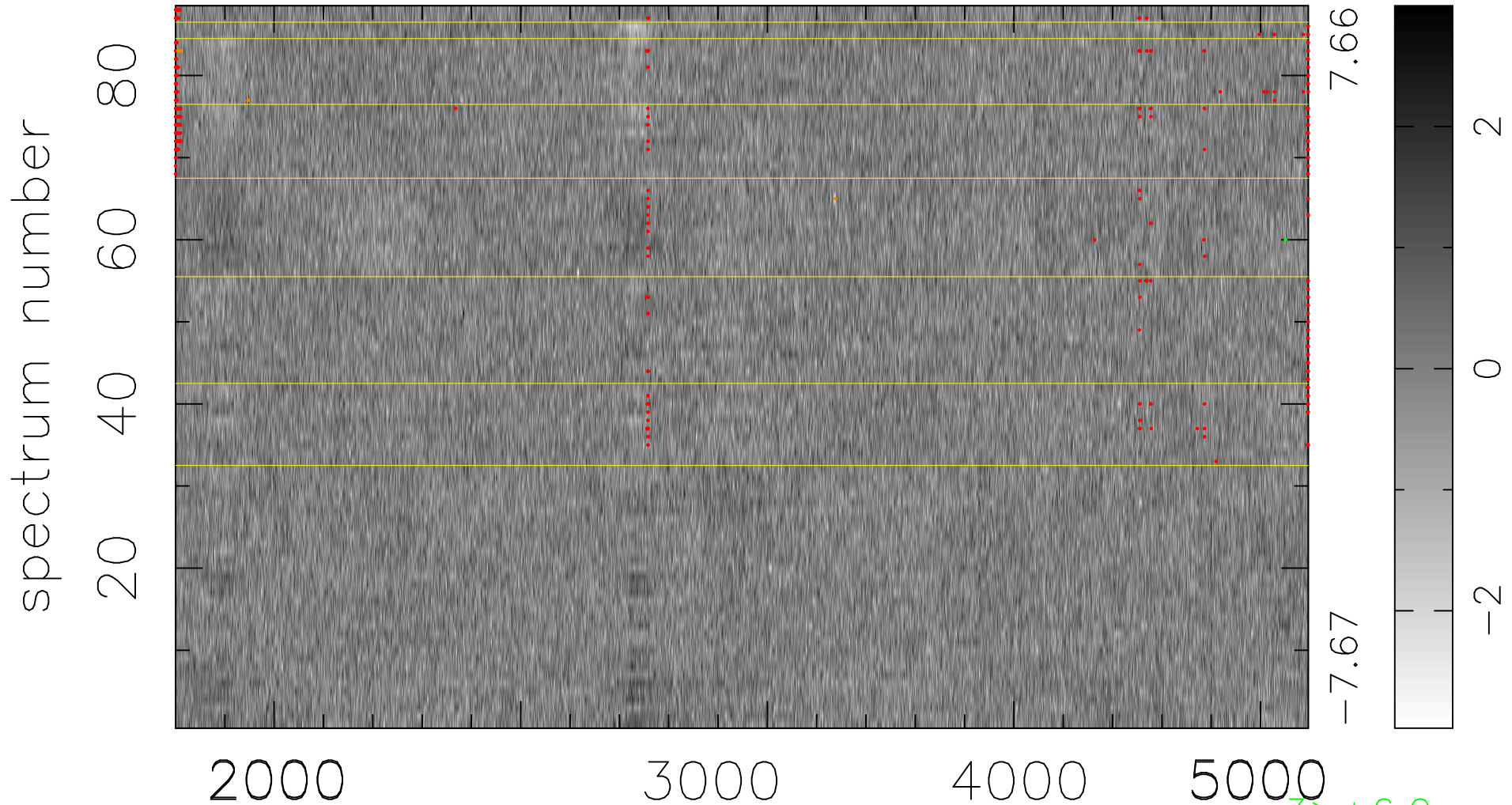


$$\chi(\lambda,t) = (\text{Data} - \text{Model } AC_5) / \sigma \chi$$

$$\chi^2 / (404272 - 4961) = 0.909 \Rightarrow 1.007$$

4594x88



-7.67 7.66

-2 0 2

3 > +6.0σ

9 < -6.0σ

bad:459=0.11%

λ (Å) z = 0.97219