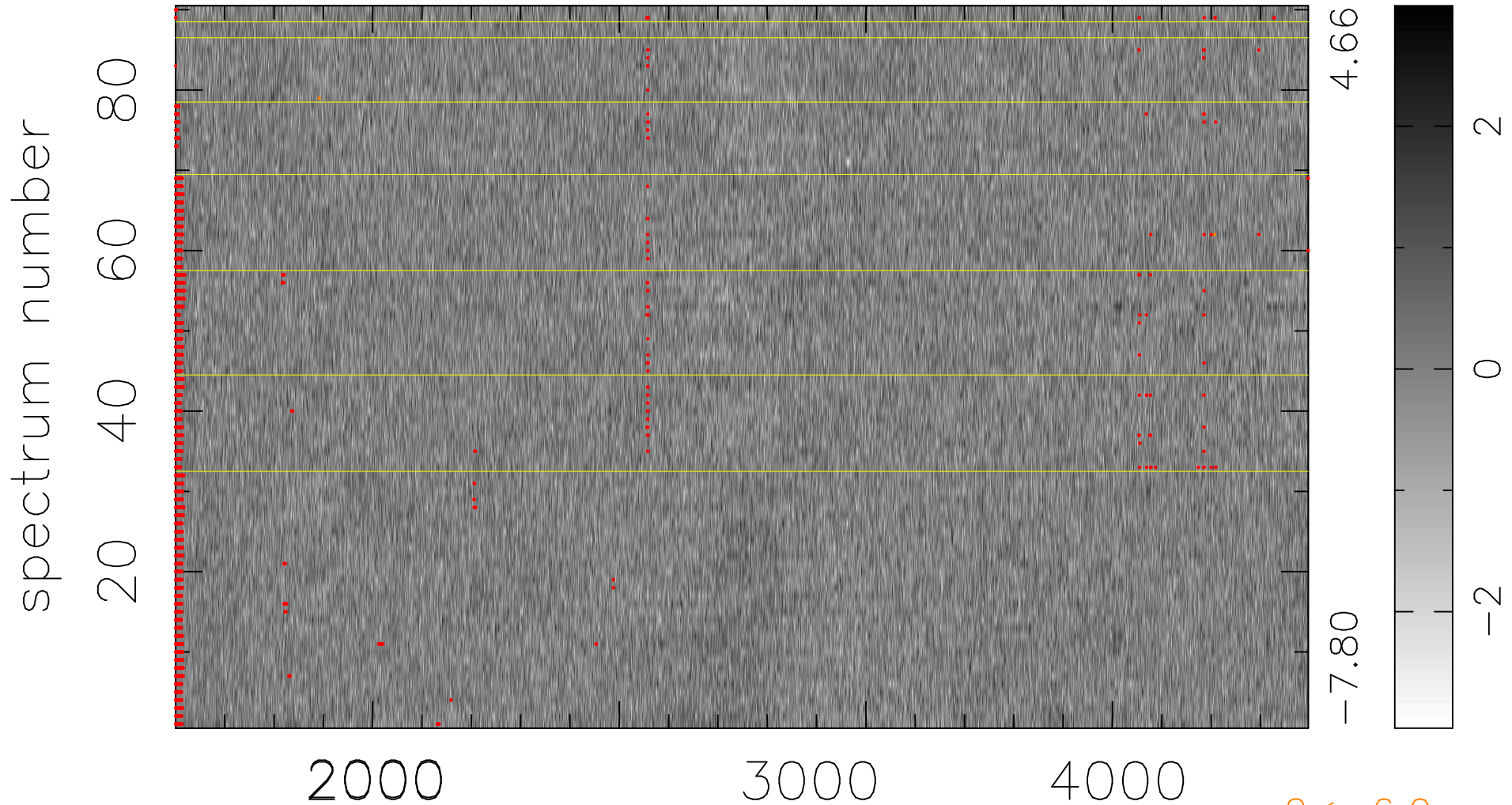


$$\chi(\lambda, t) = (\text{Data} - \text{Model AC}_5\text{F}) / \sigma \chi$$

$$\chi^2 / (413460 - 4977) = 0.887 \Rightarrow 1.007$$

4594x90



bad:2220=0.54% λ (Å) $z = 1.16276$

$2 < -6.0\sigma$