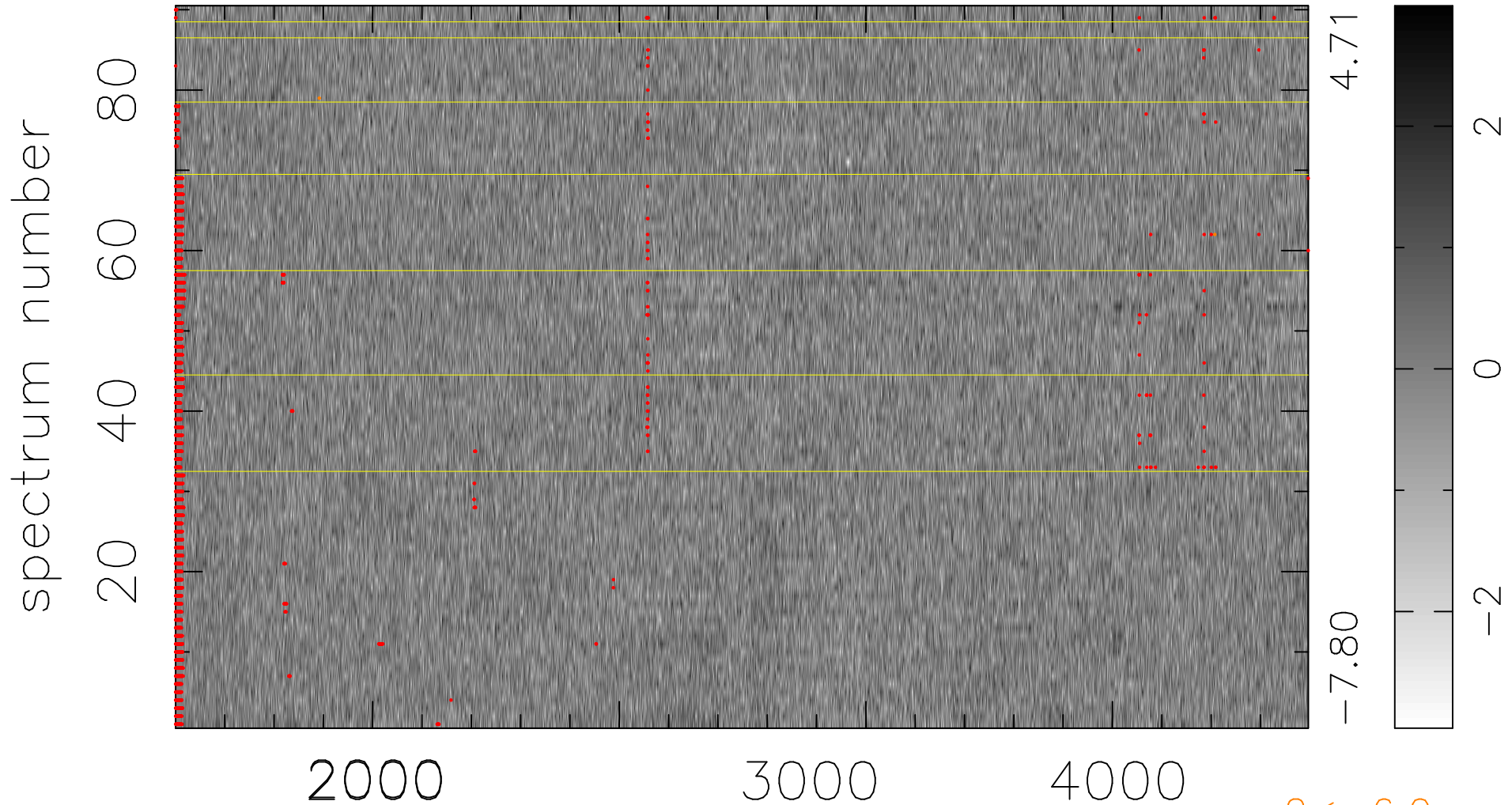


$$\chi(\lambda,t) = ( \text{Data} - \text{Model } \text{AC}_5\text{B}_3\text{F} ) / \sigma \chi$$

$$\chi^2 / (413460 - 5149) = 0.885 \Rightarrow 1.007$$

4594x90



bad:2220=0.54%  $\lambda$  (Å)  $z = 1.16276$

$2 < -6.0\sigma$