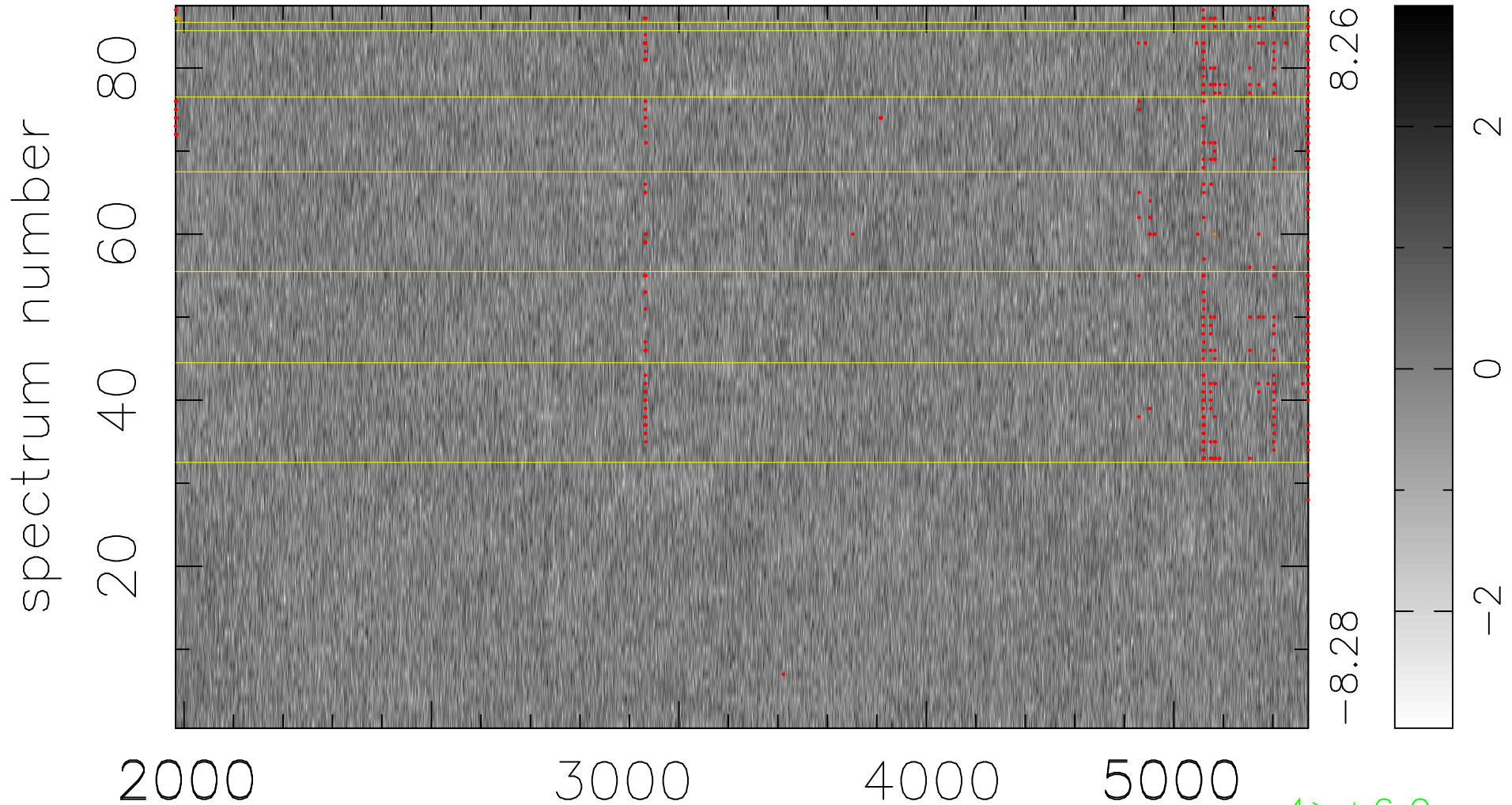


$$\chi(\lambda,t) = (\text{Data} - \text{Model } AC_5) / \sigma \chi$$

$$\chi^2 / (398286 - 4865) = 0.946 \Rightarrow 1.007$$

4578x87



bad:449=0.11%

λ (Å) $z = 0.82001$

4 > +6.0σ

7 < -6.0σ