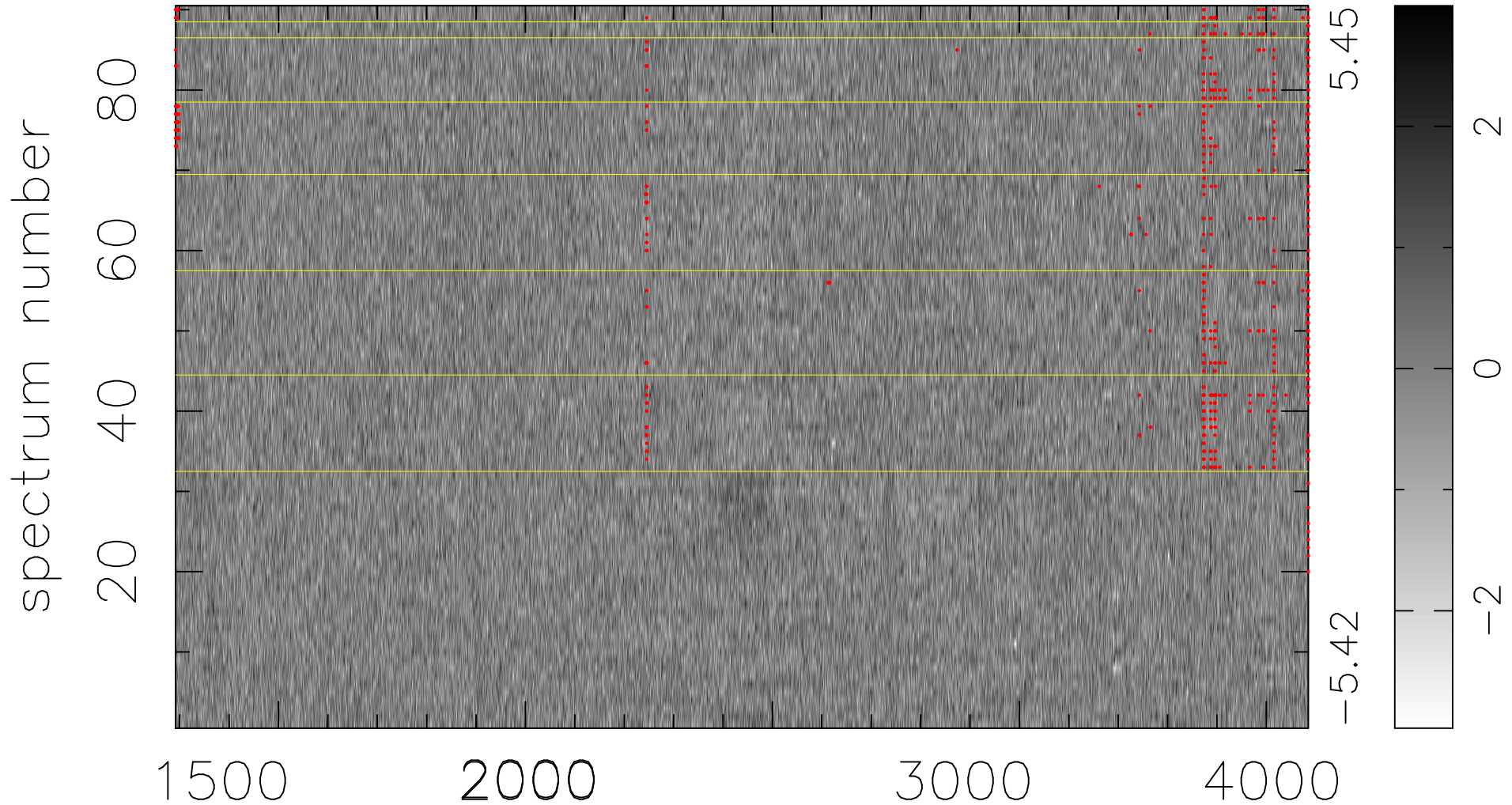


$$\chi(\lambda, t) = (\text{Data} - \text{Model } \text{AC}_5\text{B}_4\text{F}) / \sigma \chi$$

$$\chi^2 / (412830 - 5233) = 0.894 \Rightarrow 1.008$$

4587x90



bad:641=0.16% λ (Å) $z = 1.49713$