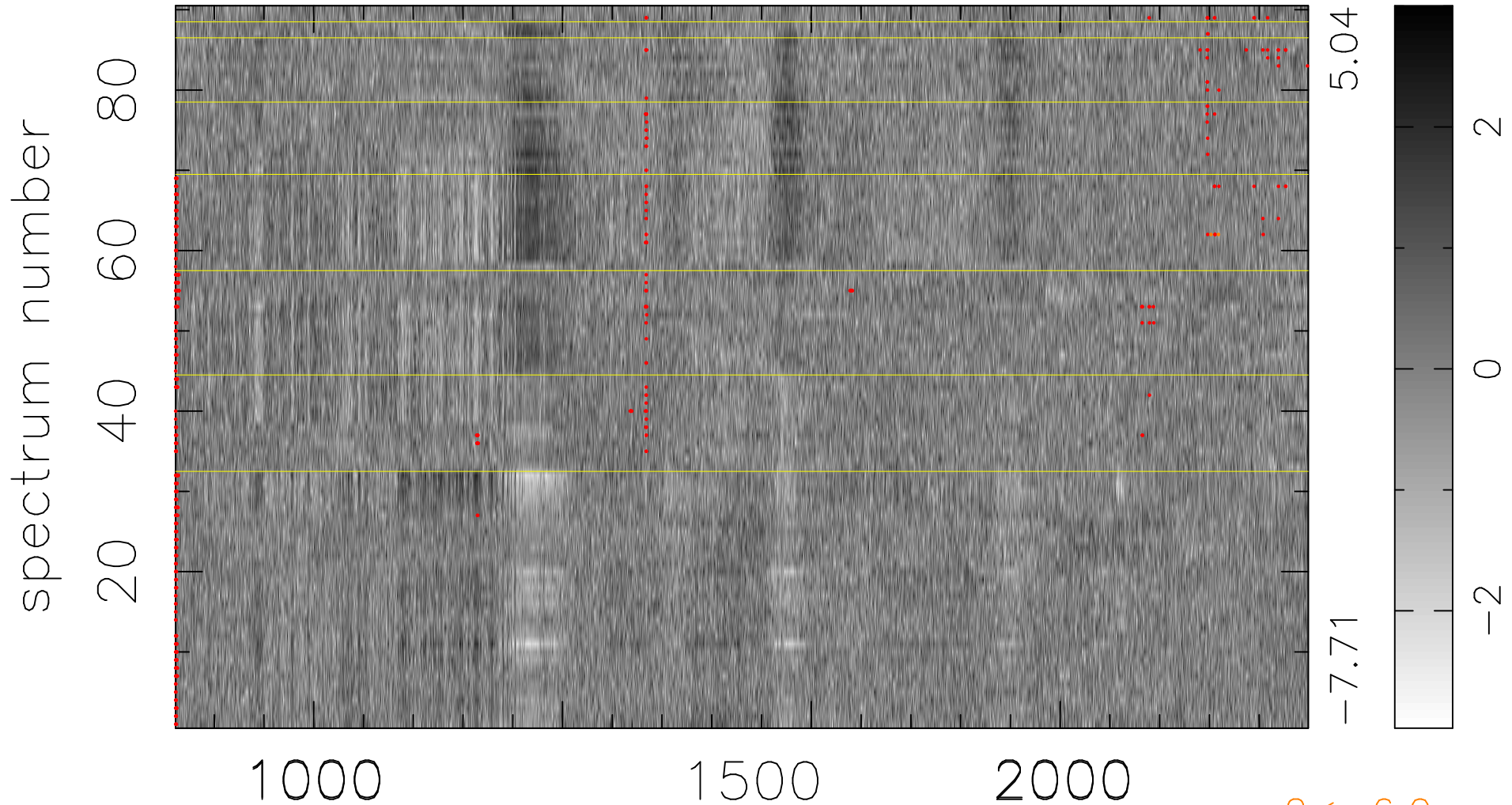


$$\chi(\lambda,t) = ( \text{Data} - \text{Model } AC_5 ) / \sigma \chi$$

$$\chi^2 / (409770 - 5131) = 1.063 \Rightarrow 1.008$$

4553x90



bad:508=0.12%

$\lambda$  (Å)  $z = 3.10101$

$2 < -6.0\sigma$