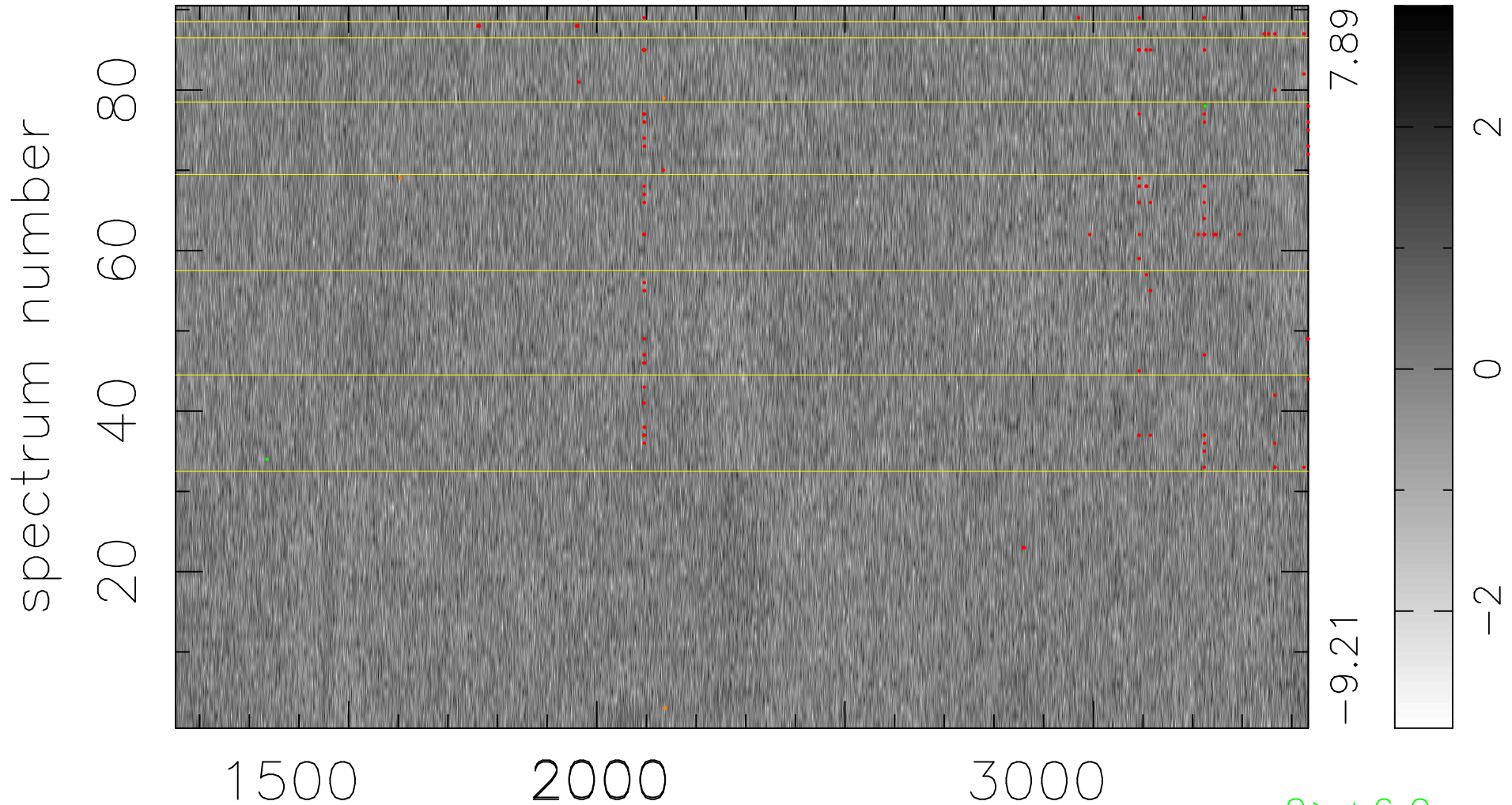


$$\chi(\lambda, t) = (\text{Data} - \text{Model } \text{AC}_5\text{B}_5\text{F}) / \sigma \chi$$

$$\chi^2 / (410760 - 5327) = 0.900 \Rightarrow 1.007$$

4564x90



bad:132=0.032% λ (Å) $z = 1.67543$

2 > +6.0 σ

5 < -6.0 σ