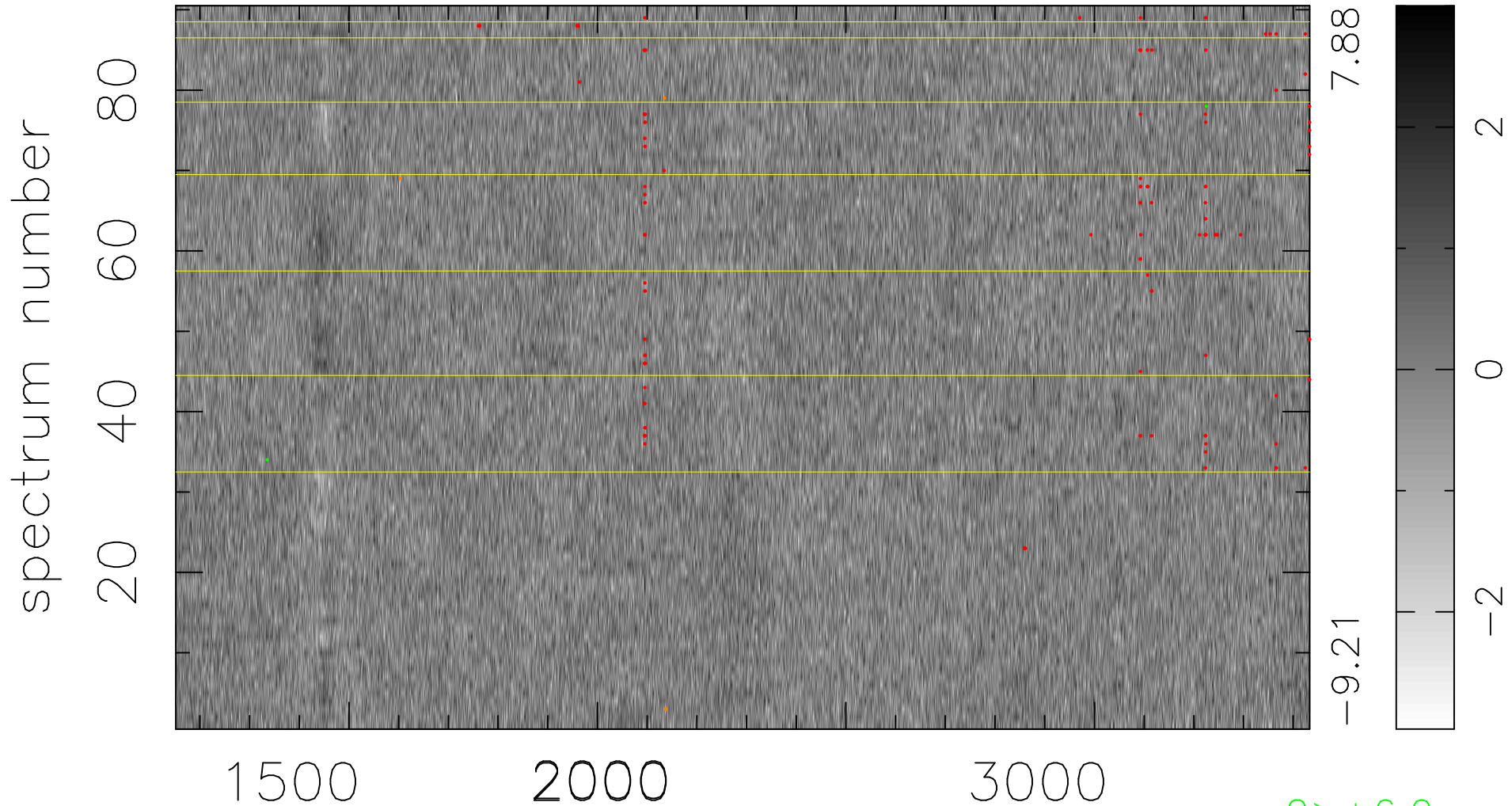


$$\chi(\lambda,t) = ( \text{Data} - \text{Model } AC_5 ) / \sigma \chi$$

$$\chi^2 / (410760 - 5045) = 0.906 \Rightarrow 1.007$$

4564x90



2 > +6.0σ

5 < -6.0σ

bad:132=0.032% λ (Å) z = 1.67543