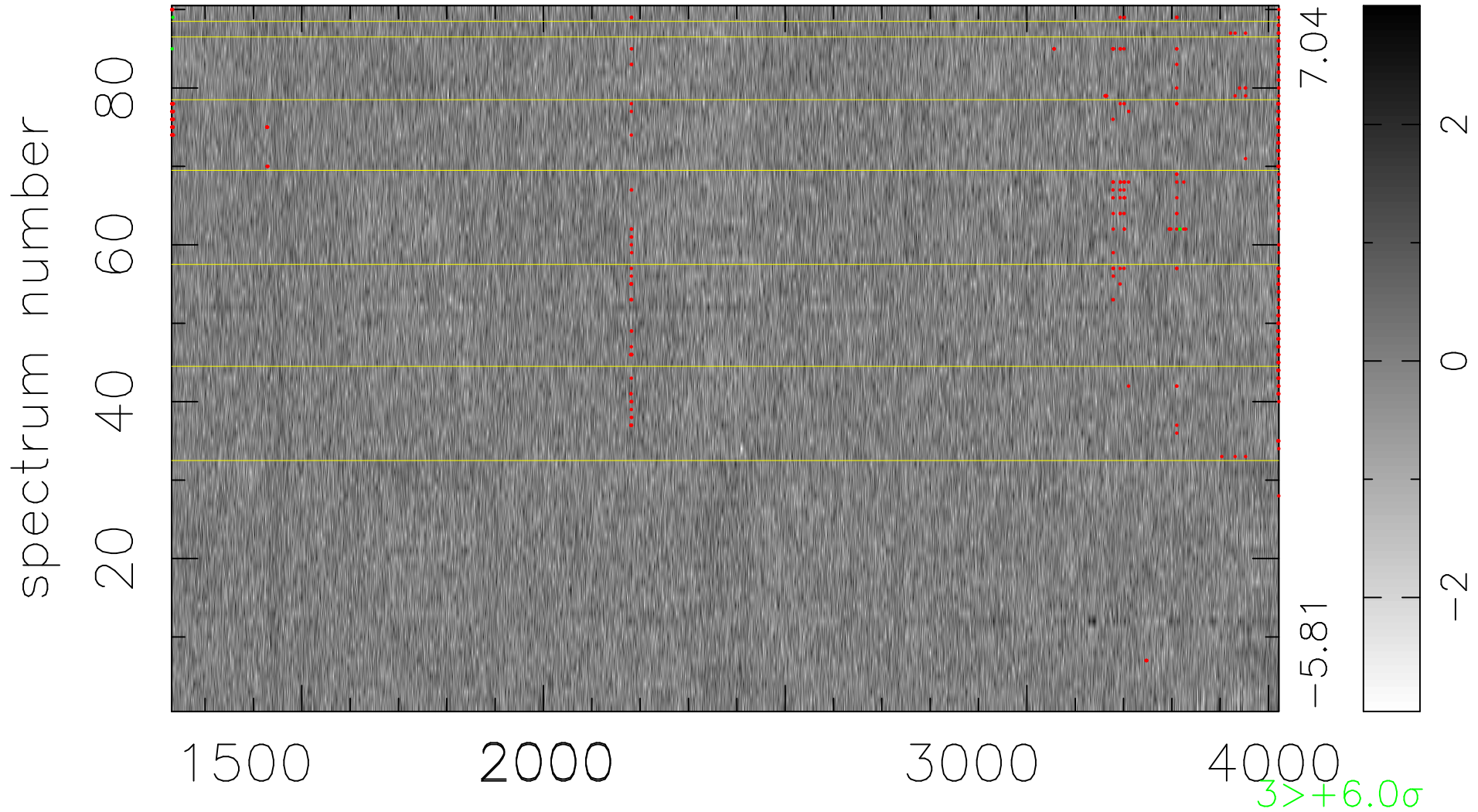


$$\chi(\lambda, t) = ( \text{Data} - \text{Model } \text{AC}_5\text{B}_4\text{F} ) / \sigma \chi$$

$$\chi^2 / (412380 - 5201) = 0.909 \Rightarrow 1.008$$

4582x90



bad:353=0.086%  $\lambda$  (Å)  $z = 1.57126$