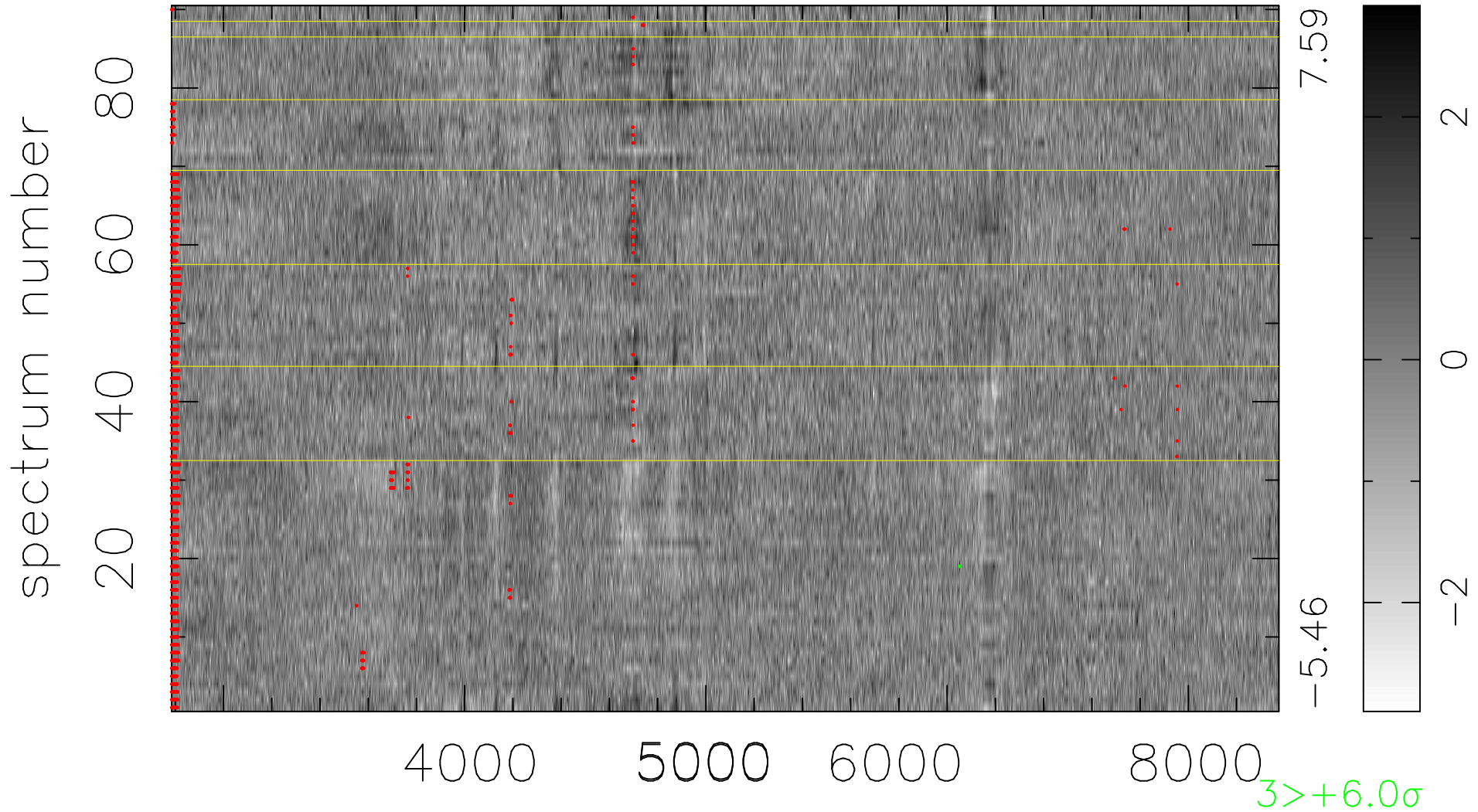


$$\chi(\lambda, t) = ( \text{Data} - \text{Model AC}_5\text{F} ) / \sigma \chi$$

$$\chi^2 / (413190 - 5076) = 0.968 \Rightarrow 0.983$$

4591 × 90



bad:2055=0.50%  $\lambda$  (Å)  $z = 0.19337$