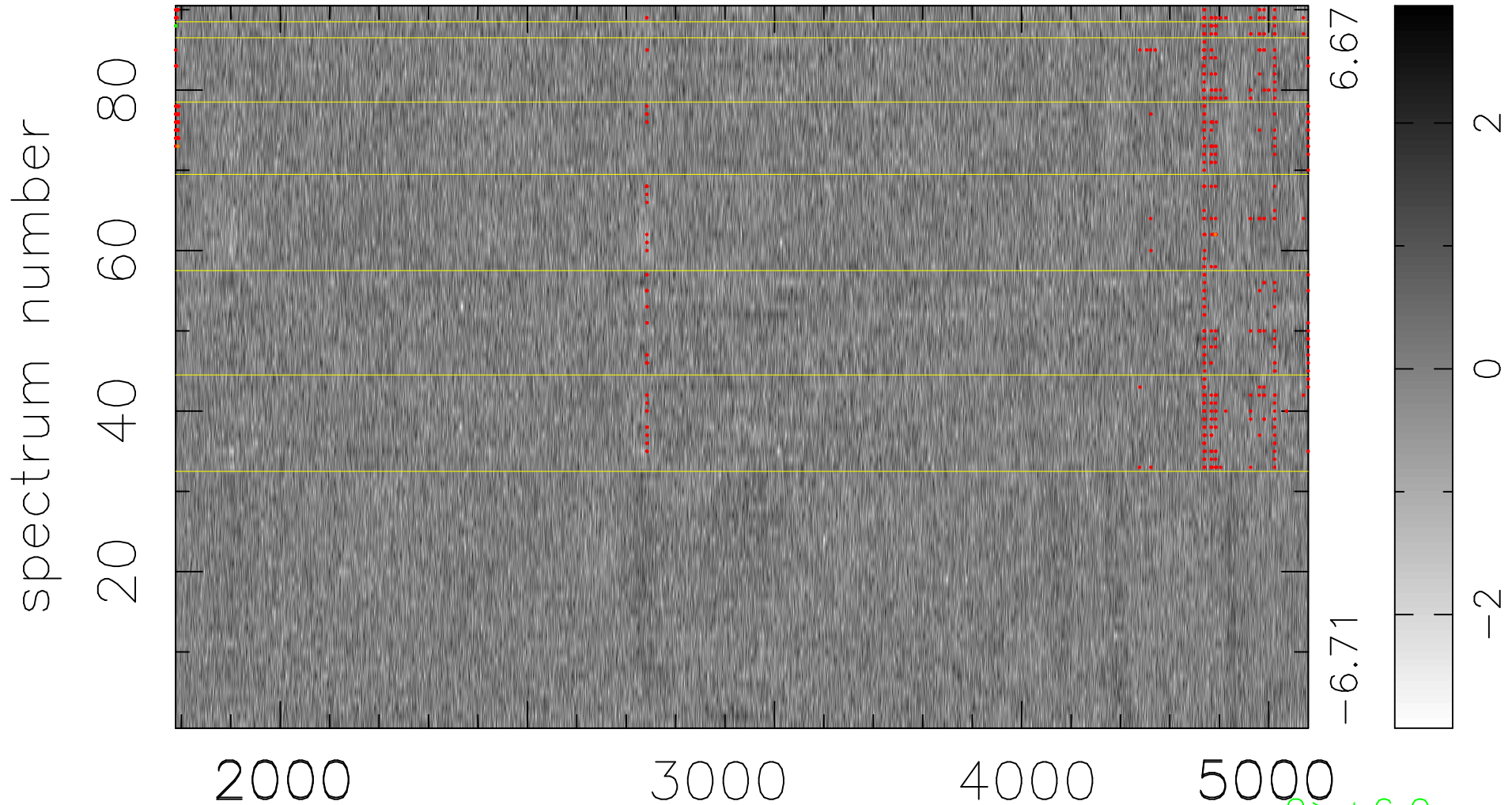


$$\chi(\lambda, t) = (\text{Data} - \text{Model AC}_5\text{F}) / \sigma \chi$$

$$\chi^2 / (412560 - 5048) = 0.904 \Rightarrow 0.992$$

4584 × 90



bad:484=0.12%

λ (Å) $z = 0.98667$

2 > +6.0σ

3 < -6.0σ