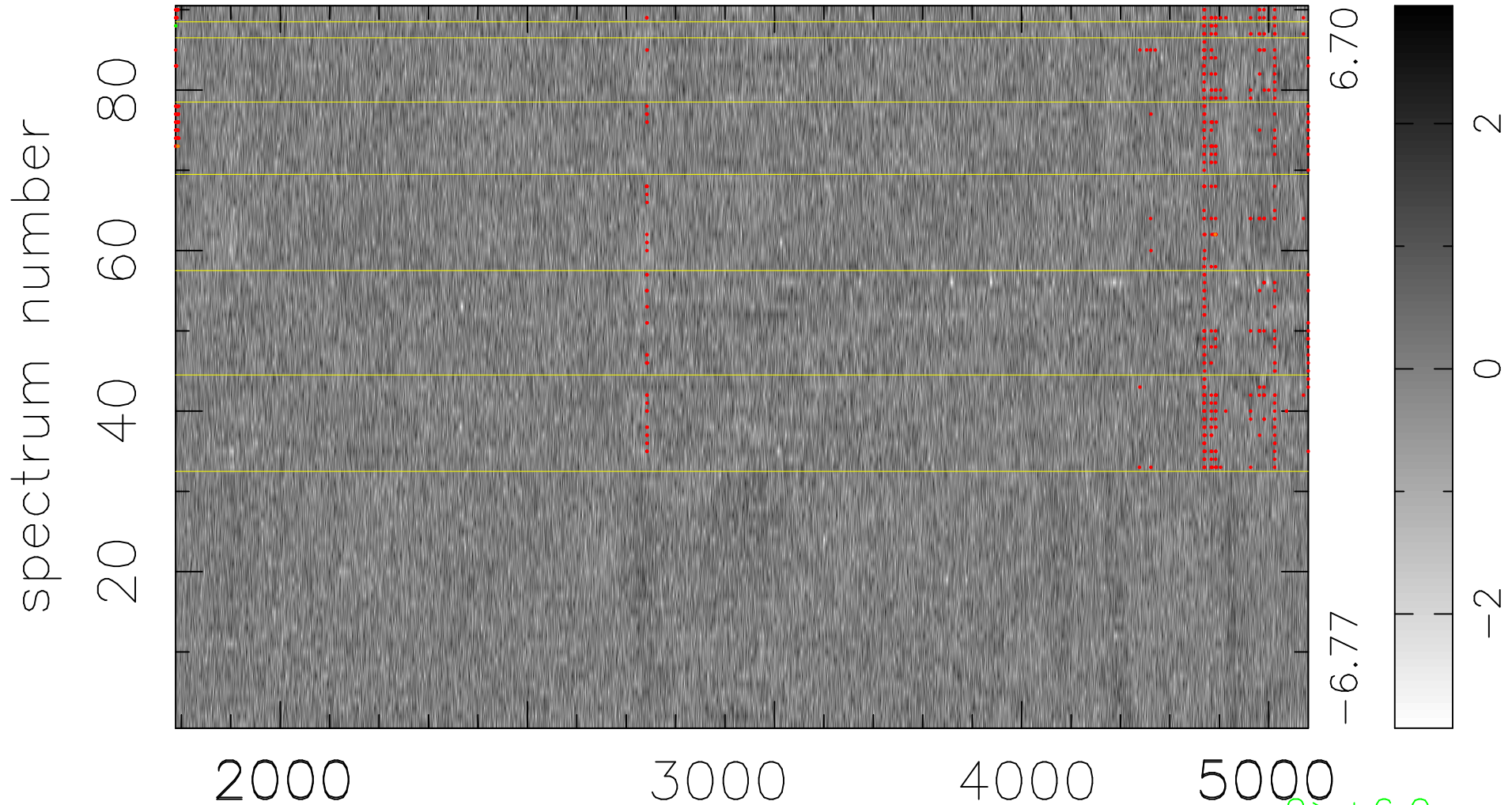


$$\chi(\lambda, t) = (\text{Data} - \text{Model } AC_5) / \sigma \chi$$

$$\chi^2 / (412560 - 4958) = 0.907 \Rightarrow 0.994$$

4584 × 90



bad:484=0.12%

λ (Å) $z = 0.98667$

2 > +6.0σ
3 < -6.0σ