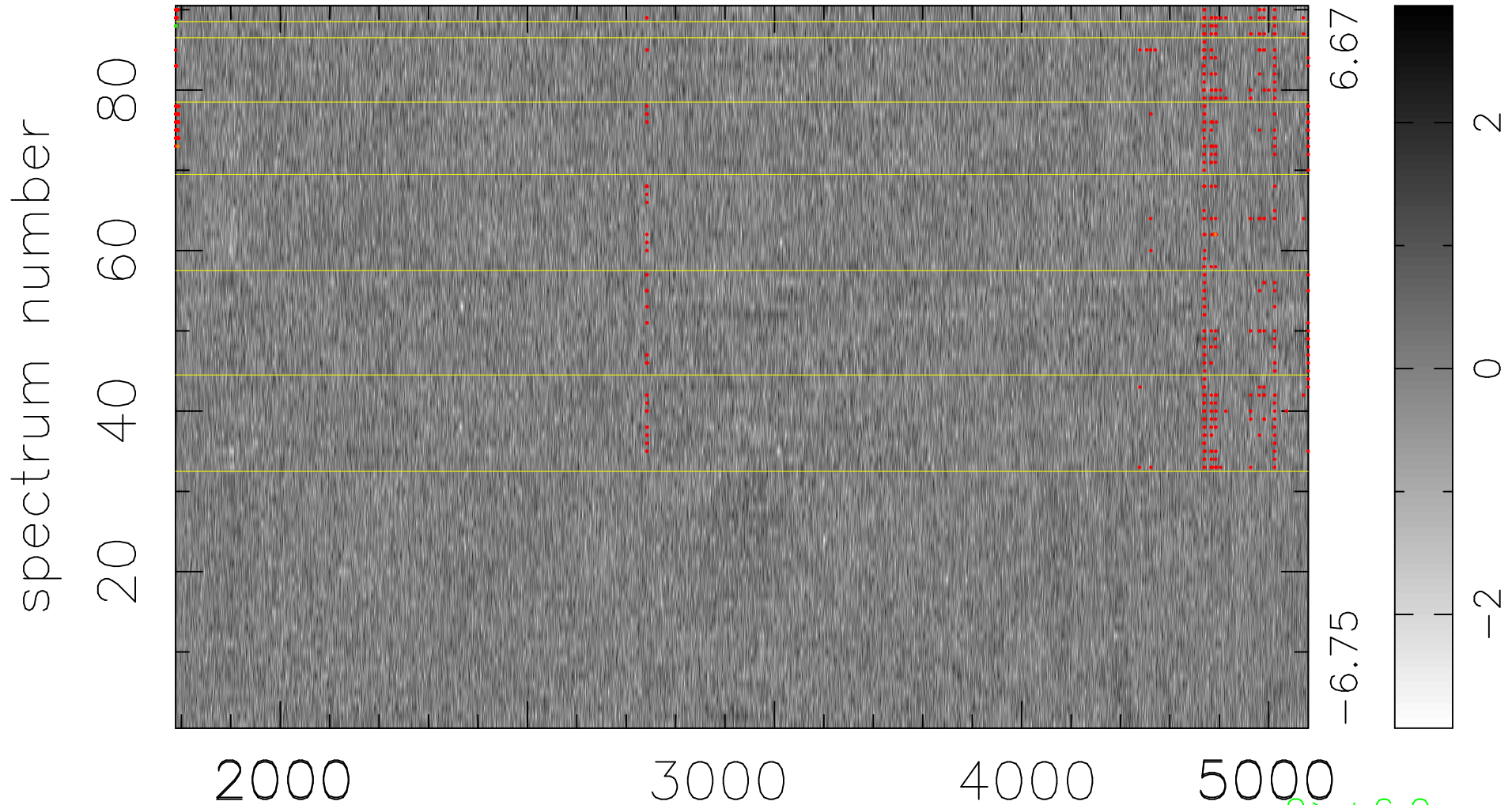


$$\chi(\lambda, t) = (\text{Data} - \text{Model } \text{AC}_5\text{B}_4\text{F}) / \sigma \chi$$

$$\chi^2 / (412560 - 5165) = 0.902 \Rightarrow 0.992$$

4584 × 90



bad:484=0.12%

λ (Å) $z = 0.98667$

2 > +6.0σ

3 < -6.0σ