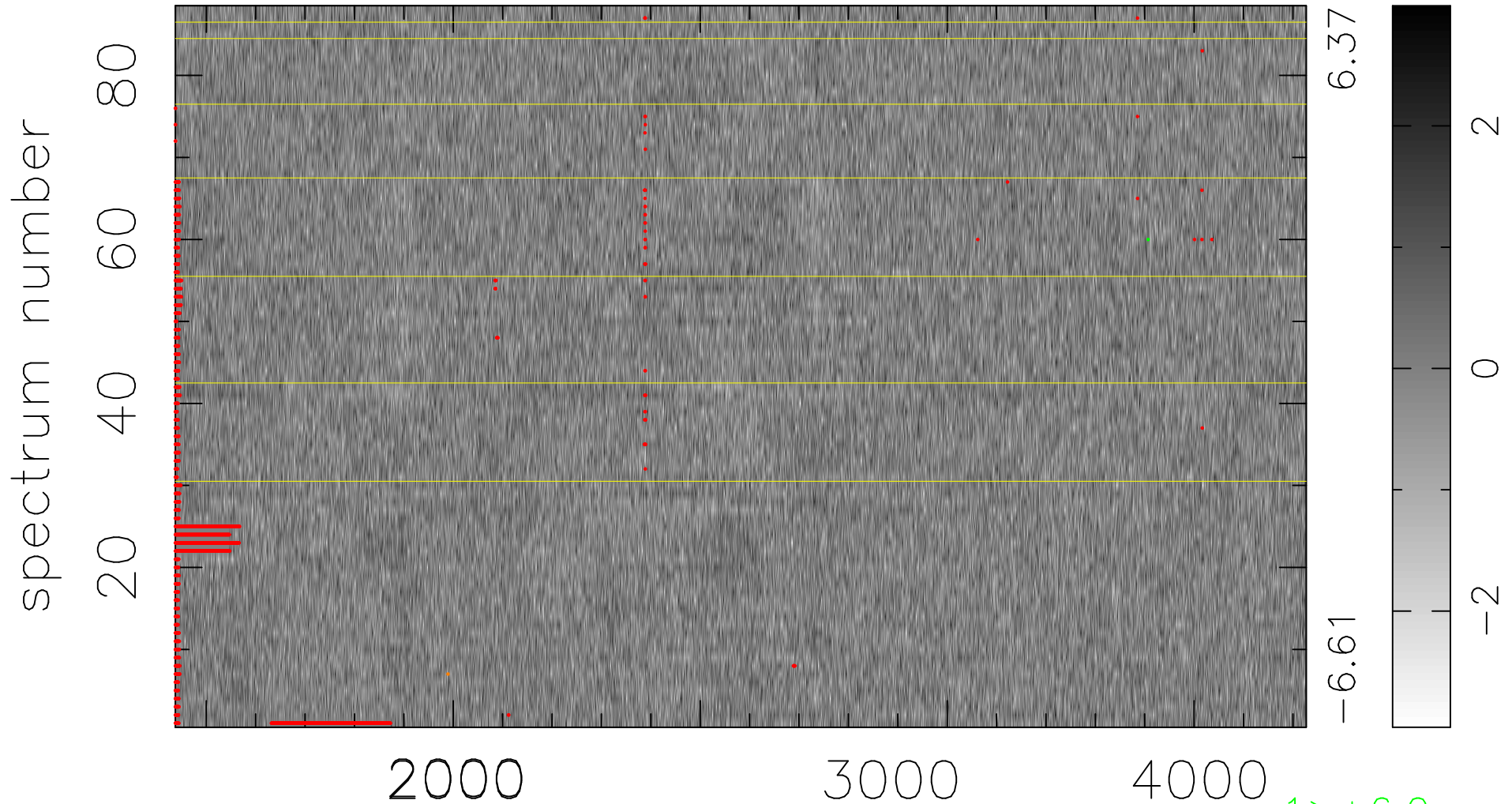


$$\chi(\lambda, t) = (\text{Data} - \text{Model } AC_5) / \sigma \chi$$

$$\chi^2 / (403040 - 4960) = 0.907 \Rightarrow 1.007$$

4580x88



1 > +6.0σ

1 < -6.0σ

bad:2519=0.62% λ (Å) z = 1.33787