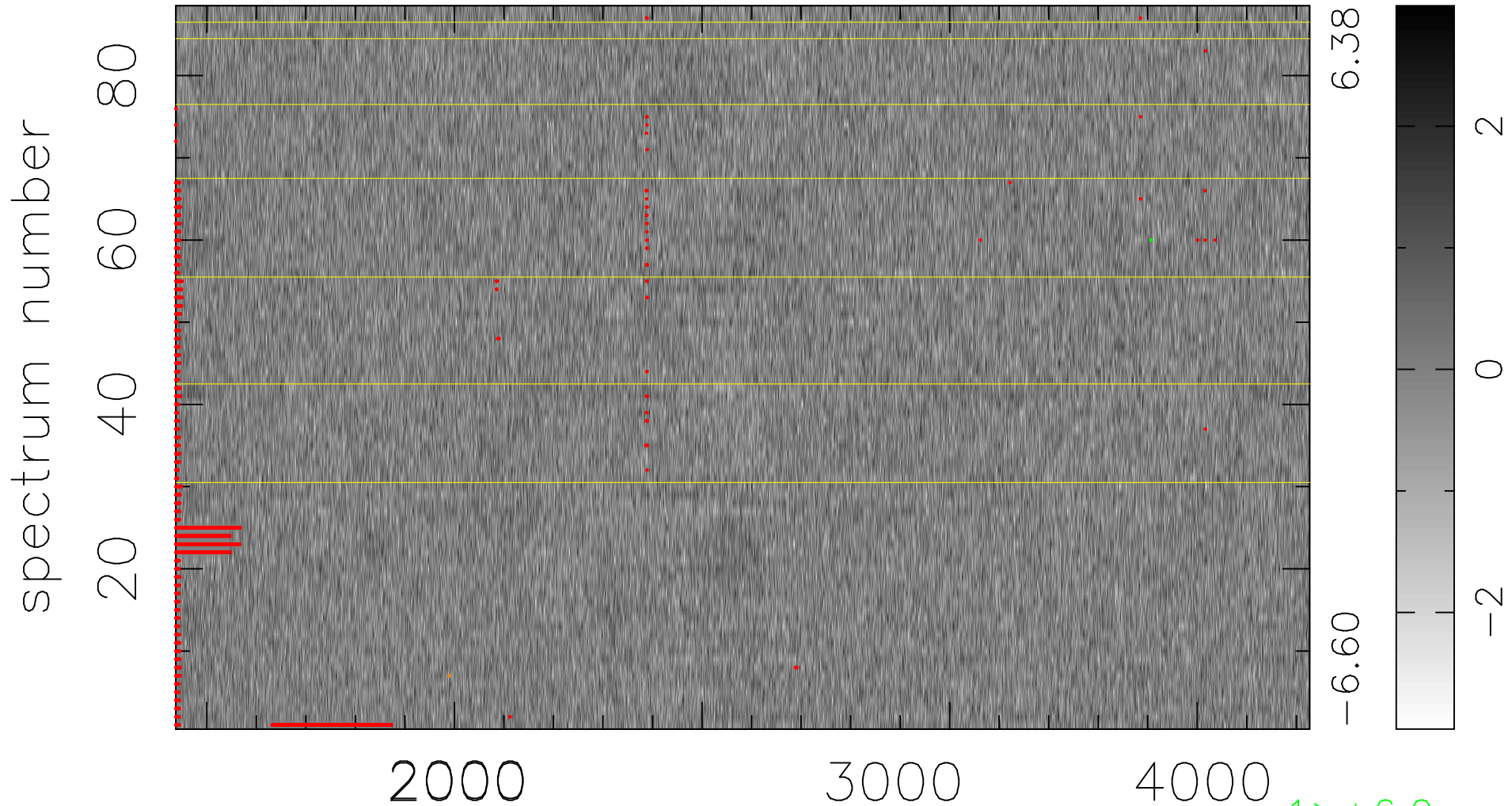


$$\chi(\lambda, t) = ( \text{Data} - \text{Model } \text{AC}_5\text{B}_4\text{F} ) / \sigma \chi$$

$$\chi^2 / (403040 - 5206) = 0.904 \Rightarrow 1.007$$

4580x88



bad:2519=0.62%  $\lambda$  (Å)  $z = 1.33787$

1 > +6.0σ

1 < -6.0σ