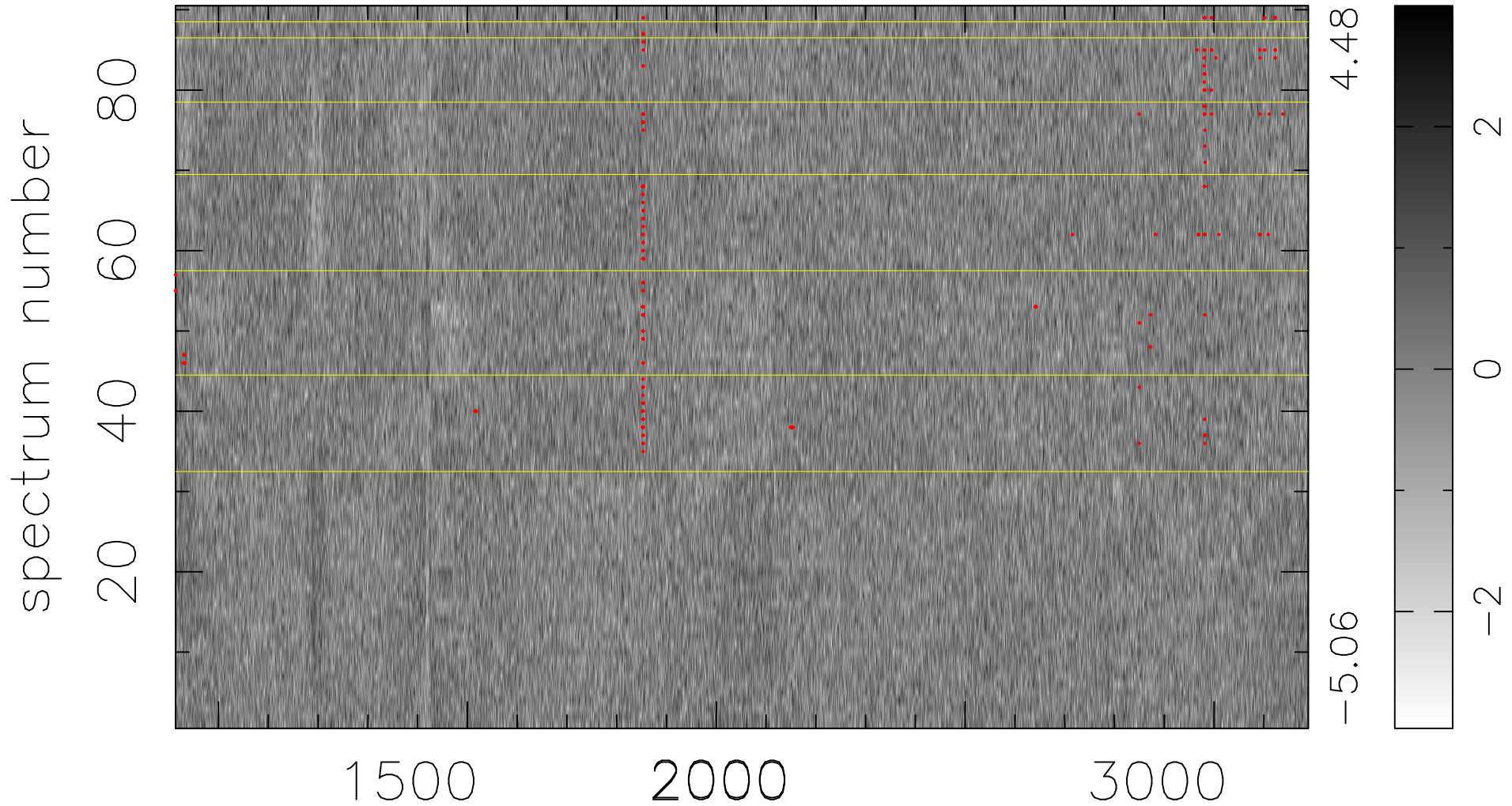


$$\chi(\lambda, t) = (\text{Data} - \text{Model } \text{AC}_5\text{B}_7\text{F}) / \sigma \chi$$

$$\chi^2 / (409680 - 5457) = 0.899 \Rightarrow 1.006$$

4552x90



bad:177=0.043% λ (Å) $z = 1.99186$