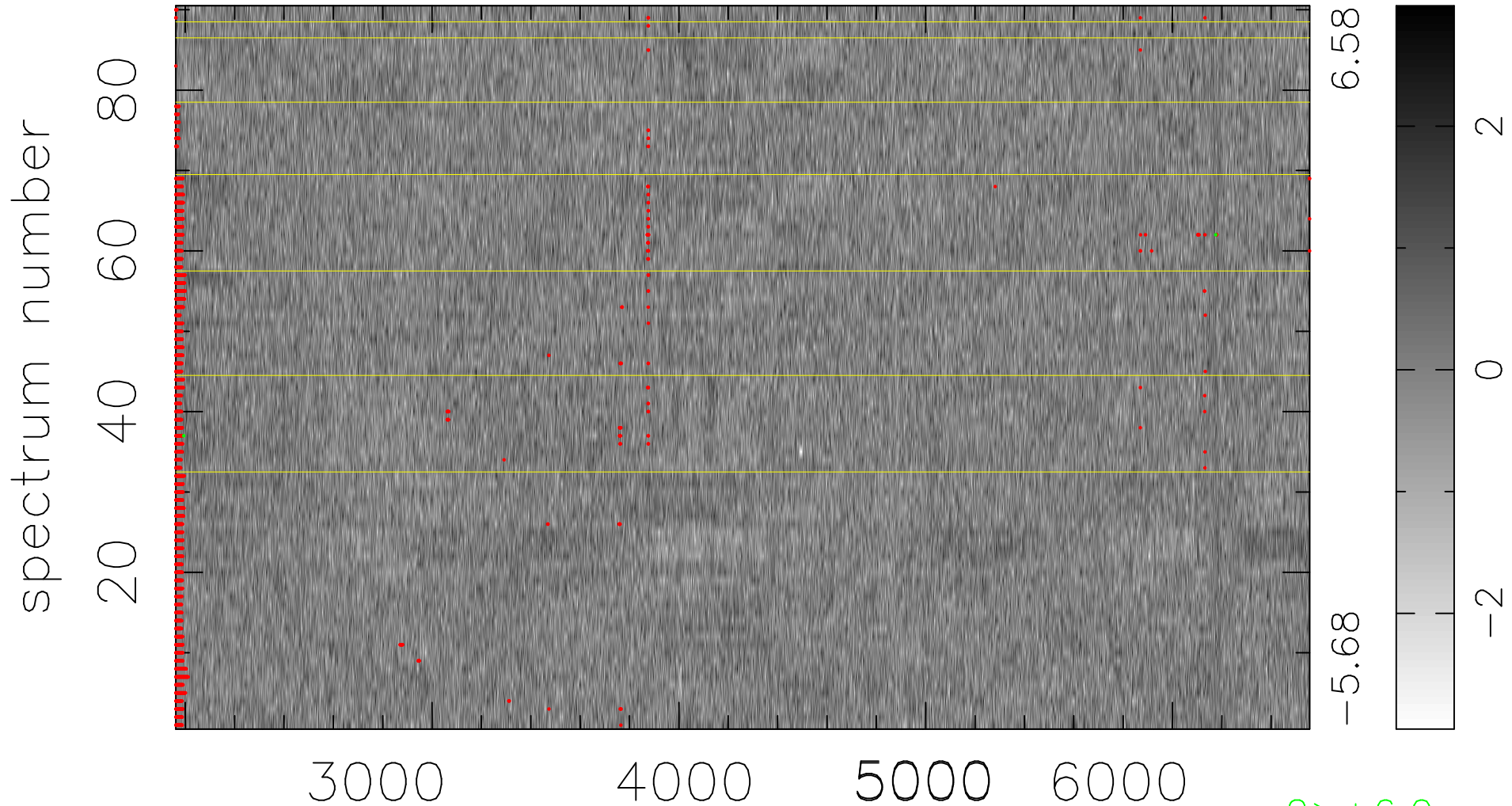


$$\chi(\lambda, t) = ( \text{Data} - \text{Model } \text{AC}_5\text{B}_4\text{F} ) / \sigma \chi$$

$$\chi^2 / (413550 - 5254) = 0.957 \Rightarrow 1.005$$

4595x90



bad:2218=0.54%  $\lambda$  (Å)  $z = 0.44189$