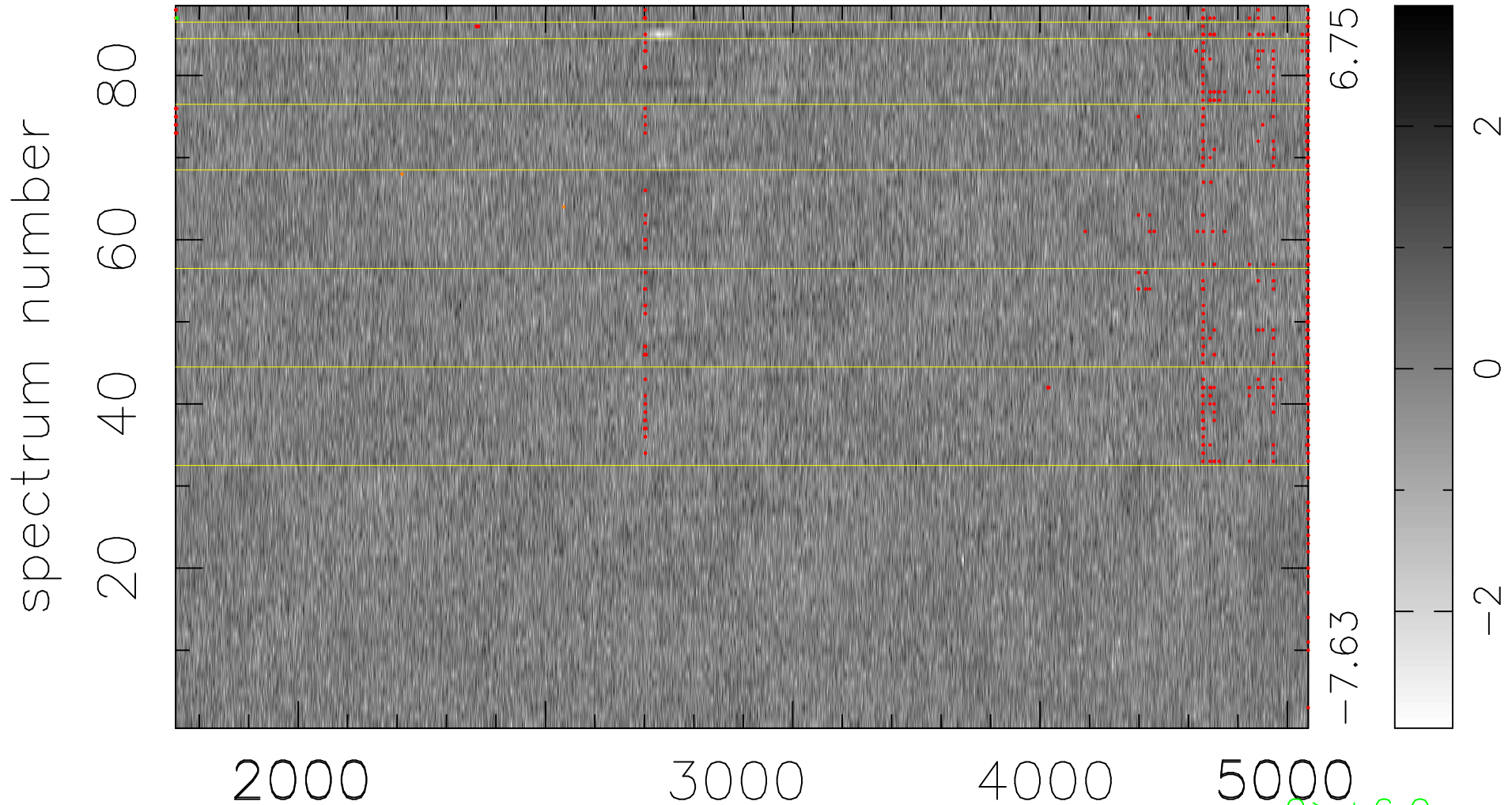


$$\chi(\lambda, t) = (\text{Data} - \text{Model AC}_5\text{F}) / \sigma \chi$$

$$\chi^2 / (403128 - 5041) = 0.942 \Rightarrow 1.006$$

4581 × 88



bad:606=0.15%

λ (Å) $z = 1.02370$

2 > +6.0σ

4 < -6.0σ