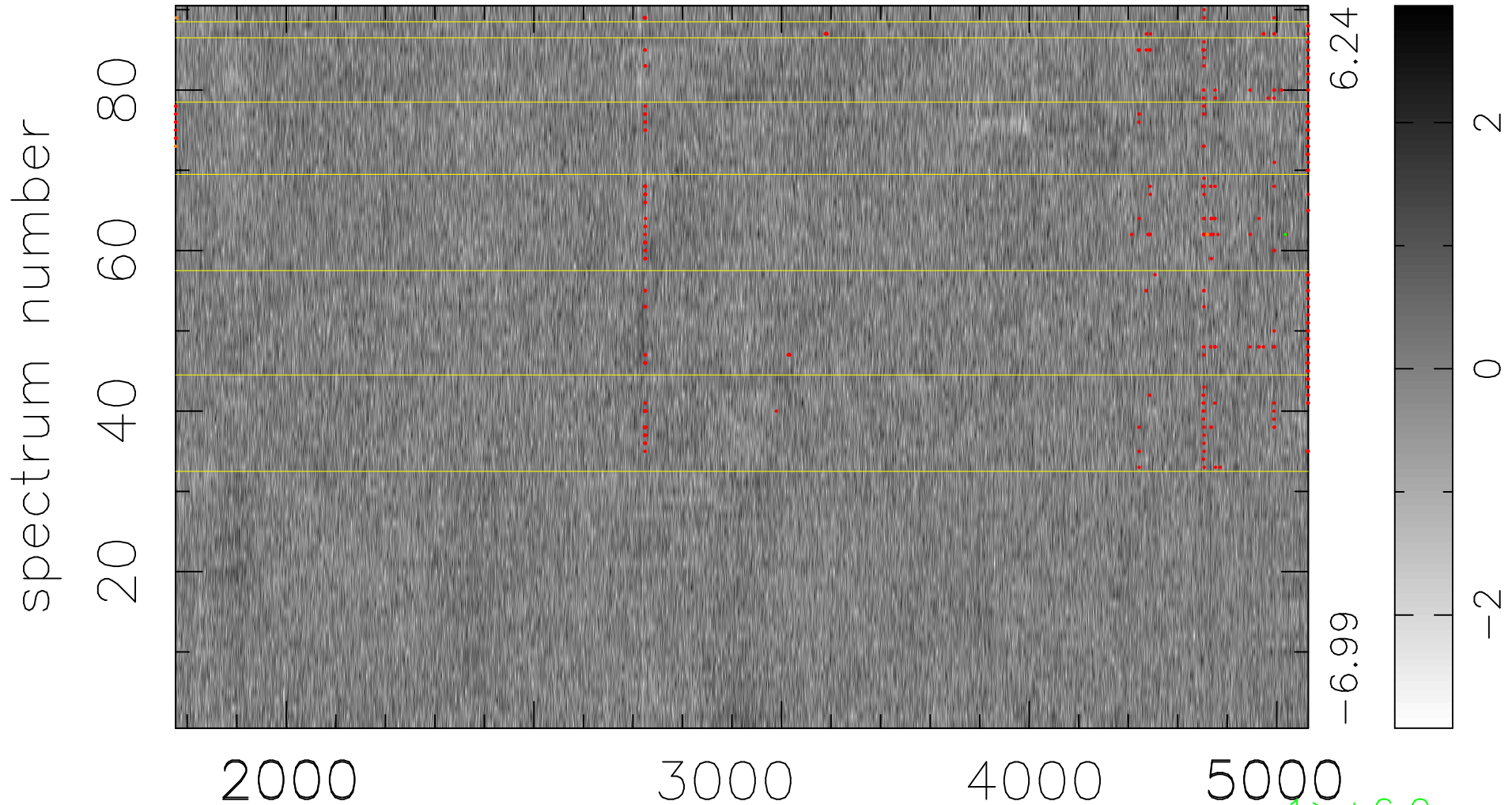


$$\chi(\lambda, t) = ( \text{Data} - \text{Model AC}_5\text{F} ) / \sigma \chi$$

$$\chi^2 / (411750 - 5054) = 0.972 \Rightarrow 0.990$$

4575x90



bad:324=0.079%  $\lambda$  (Å)  $z = 1.00264$

1 > +6.0σ  
3 < -6.0σ