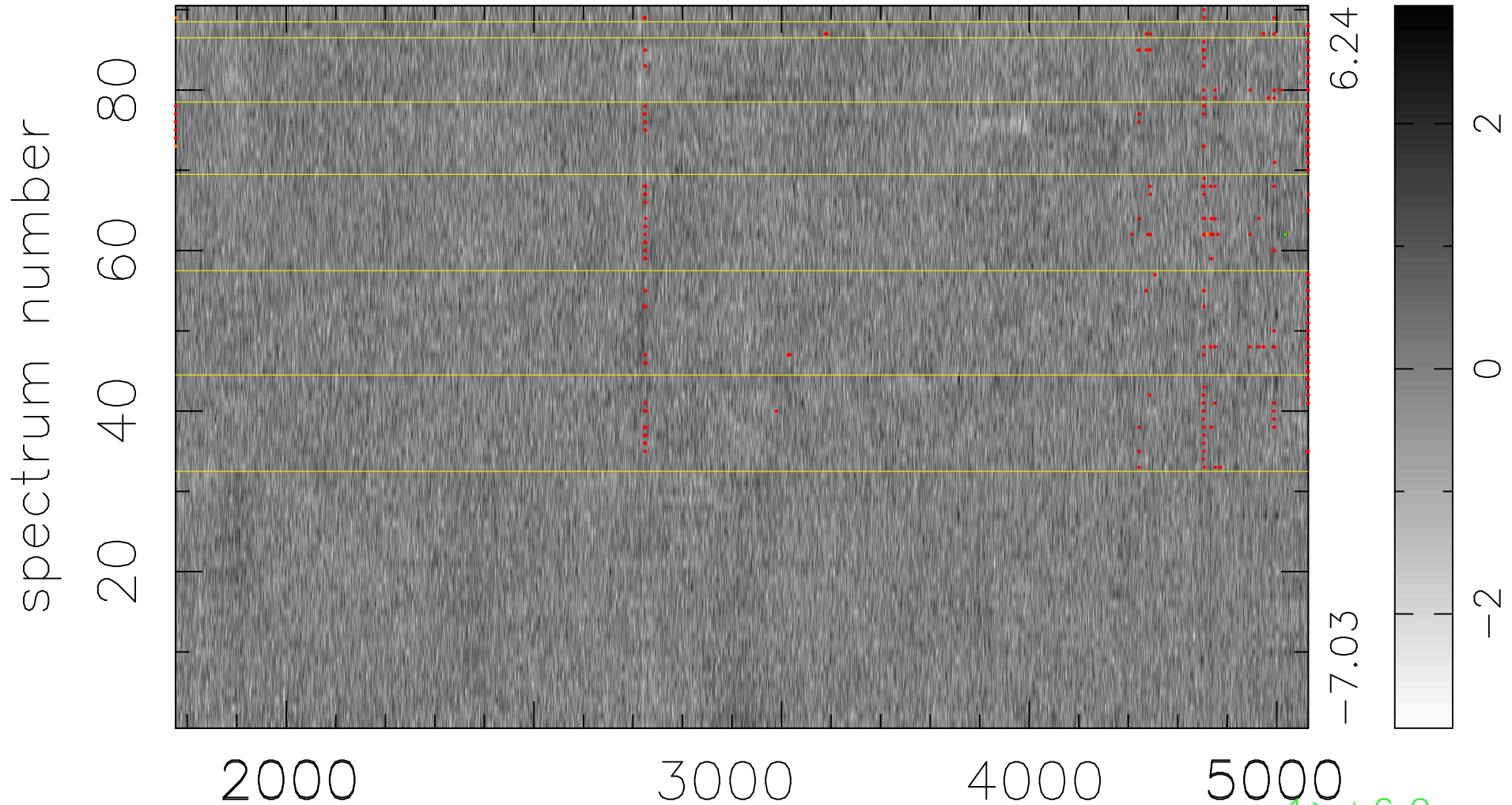


$$\chi(\lambda, t) = ( \text{Data} - \text{Model } AC_5 ) / \sigma \chi$$

$$\chi^2 / (411750 - 4964) = 0.976 \Rightarrow 0.994$$

4575x90



bad:324=0.079%  $\lambda$  (Å)  $z = 1.00264$

1 > +6.0σ  
3 < -6.0σ