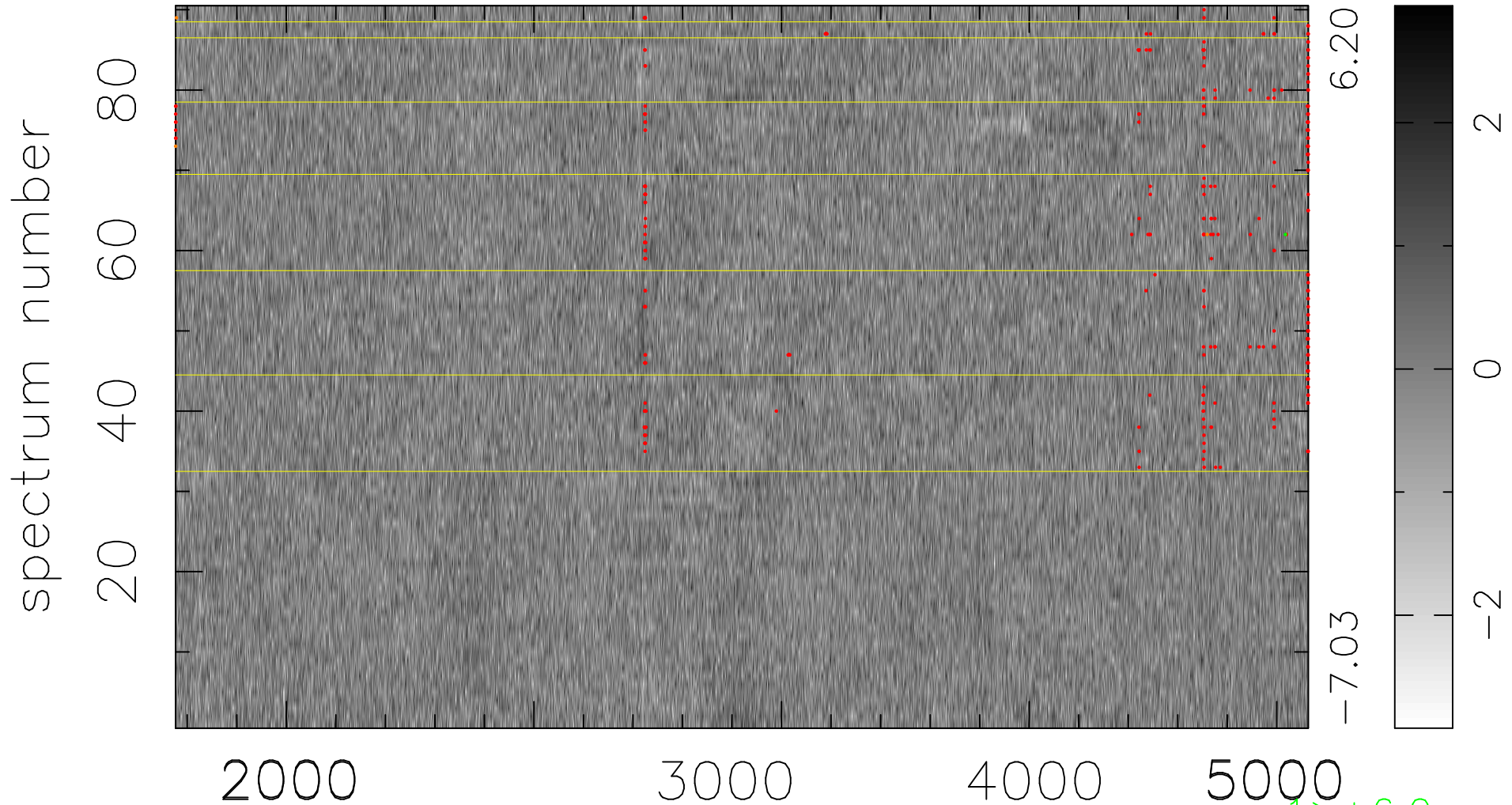


$$\chi(\lambda, t) = (\text{Data} - \text{Model } \text{AC}_5\text{B}_4\text{F}) / \sigma \chi$$

$$\chi^2 / (411750 - 5243) = 0.969 \Rightarrow 0.990$$

4575x90



bad:324=0.079% λ (Å) $z = 1.00264$

1 > +6.0σ
3 < -6.0σ