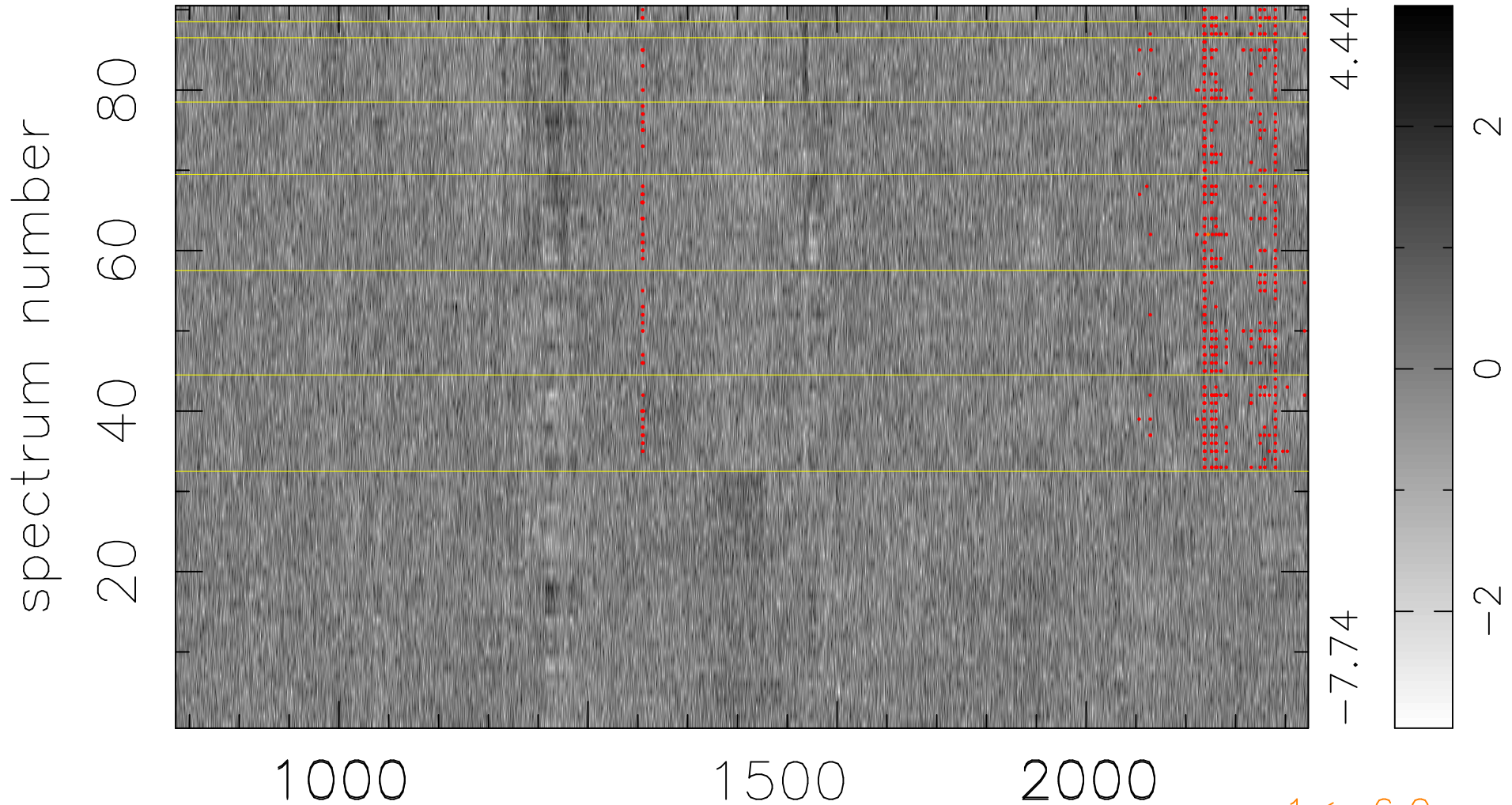


$$\chi(\lambda,t) = (\text{Data} - \text{Model } AC_5) / \sigma \chi$$

$$\chi^2 / (409320 - 5128) = 0.926 \Rightarrow 1.006$$

4548x90



4.44

-7.74

2

0

-2

1 < -6.0σ

bad:584=0.14%

λ (Å) $z = 3.21258$