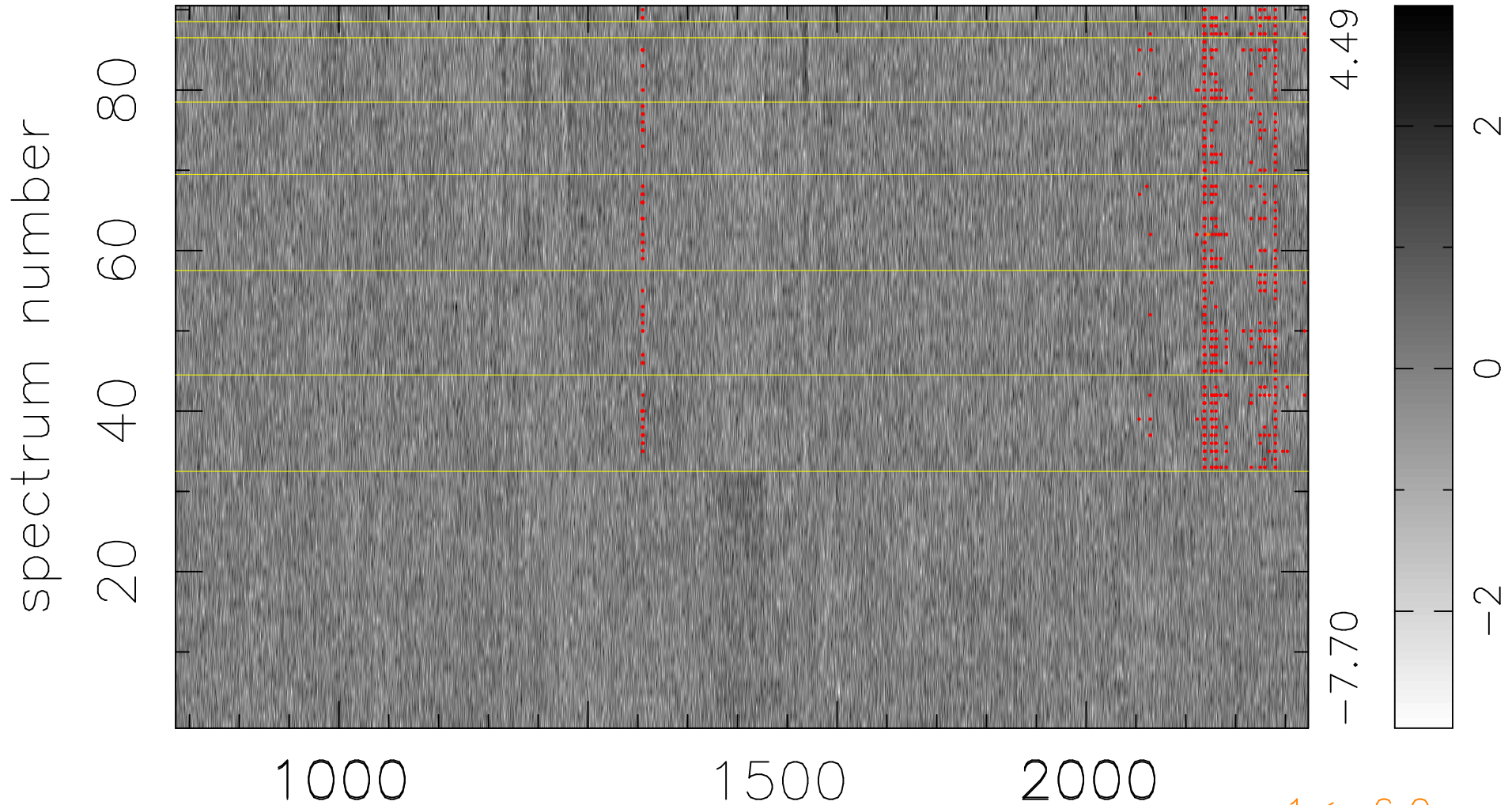


$$\chi(\lambda, t) = (\text{Data} - \text{Model } \text{AC}_5\text{B}_6\text{F}) / \sigma \chi$$

$$\chi^2 / (409320 - 5351) = 0.915 \Rightarrow 1.006$$

4548x90



bad:584=0.14%

λ (Å) $z = 3.21258$