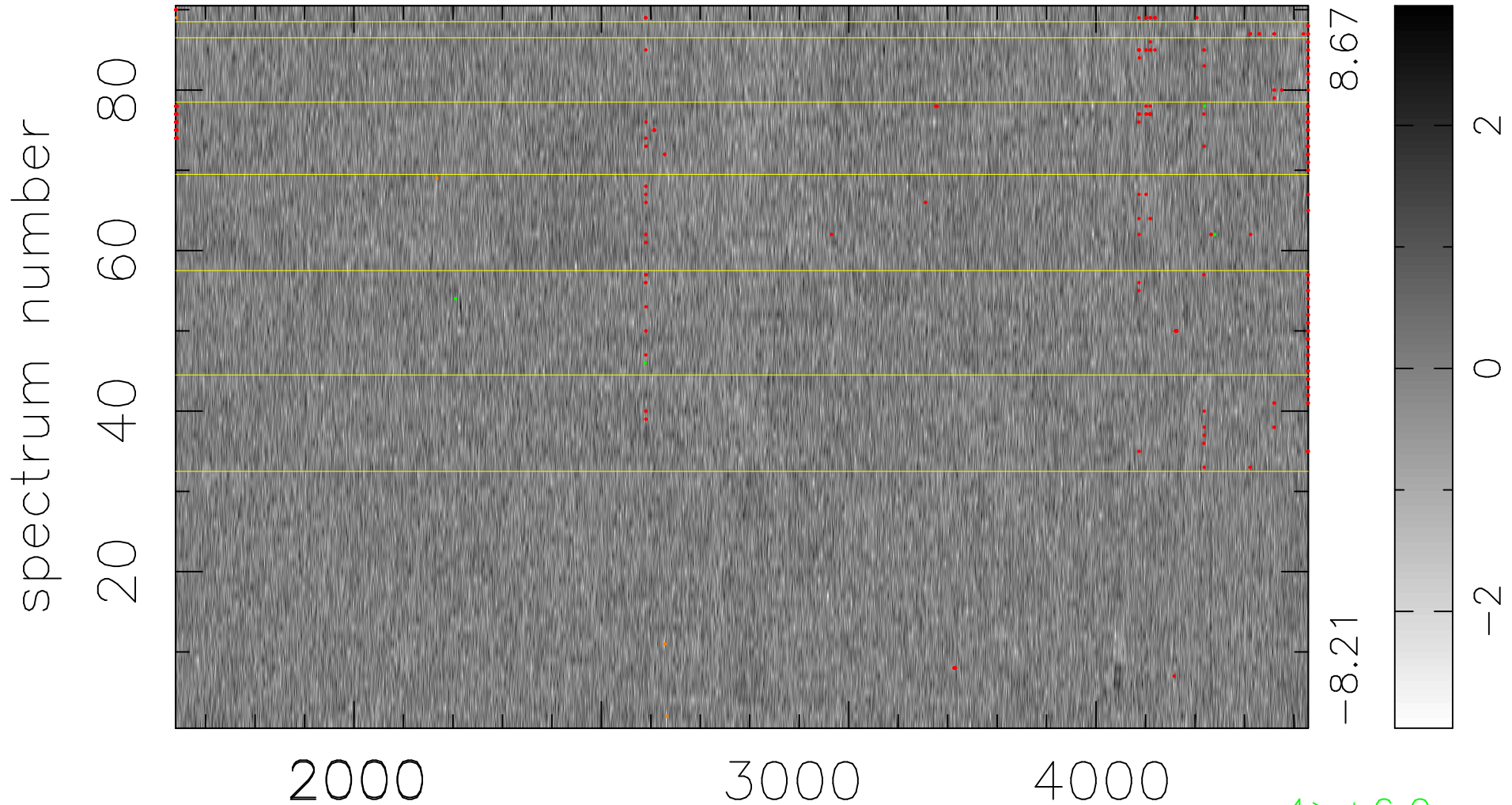


$$\chi(\lambda, t) = (\text{Data} - \text{Model } \text{AC}_5\text{B}_3\text{F}) / \sigma \chi$$

$$\chi^2 / (412200 - 5137) = 0.898 \Rightarrow 1.003$$

4580x90



4 > +6.0σ

5 < -6.0σ

bad:266=0.065% λ (Å) z = 1.13069