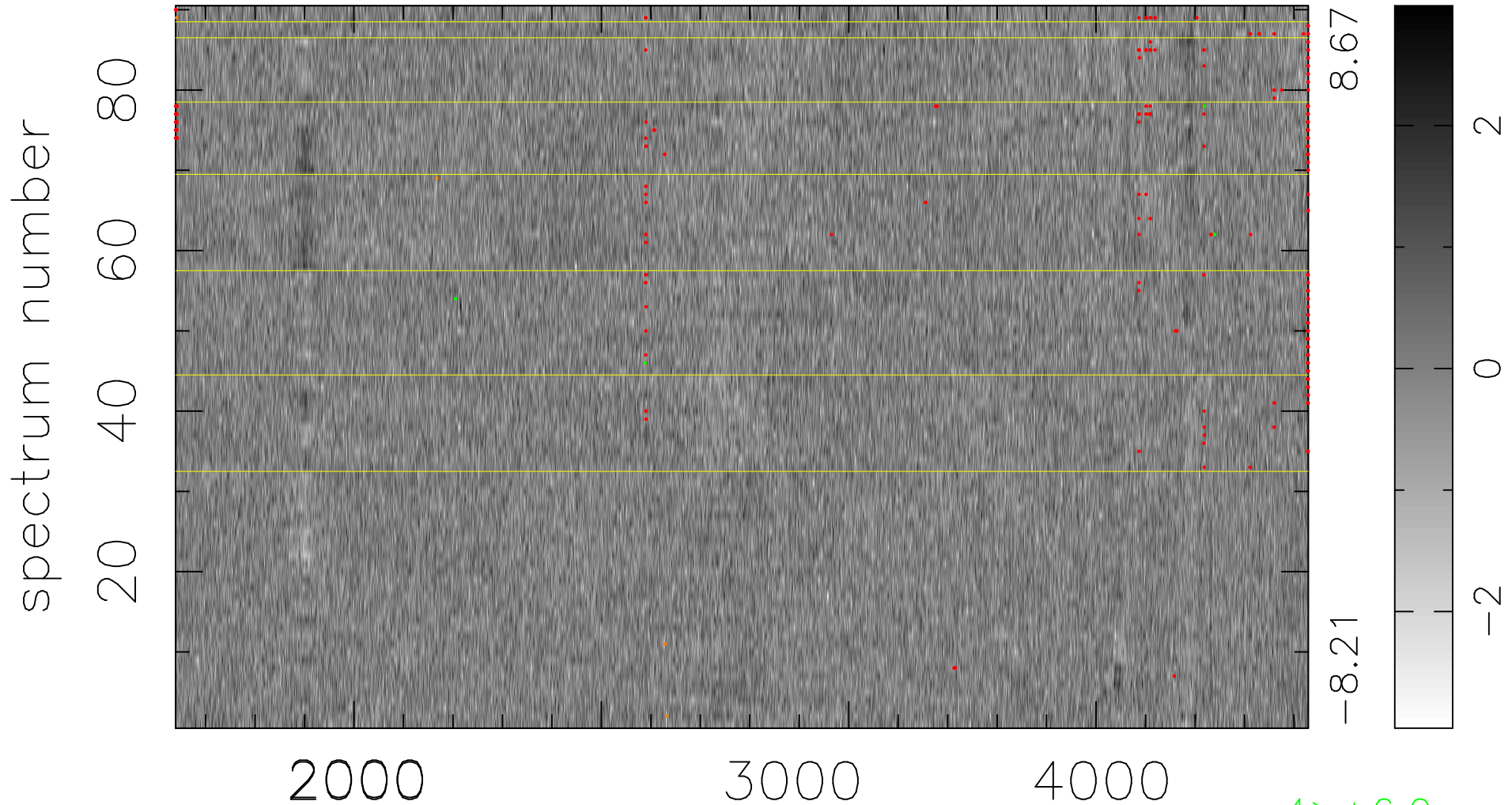


$$\chi(\lambda, t) = ( \text{Data} - \text{Model AC}_5\text{F} ) / \sigma \chi$$

$$\chi^2 / (412200 - 4969) = 0.905 \Rightarrow 1.003$$

4580x90



4 > +6.0σ

5 < -6.0σ

bad:266=0.065%    λ (Å)    z = 1.13069