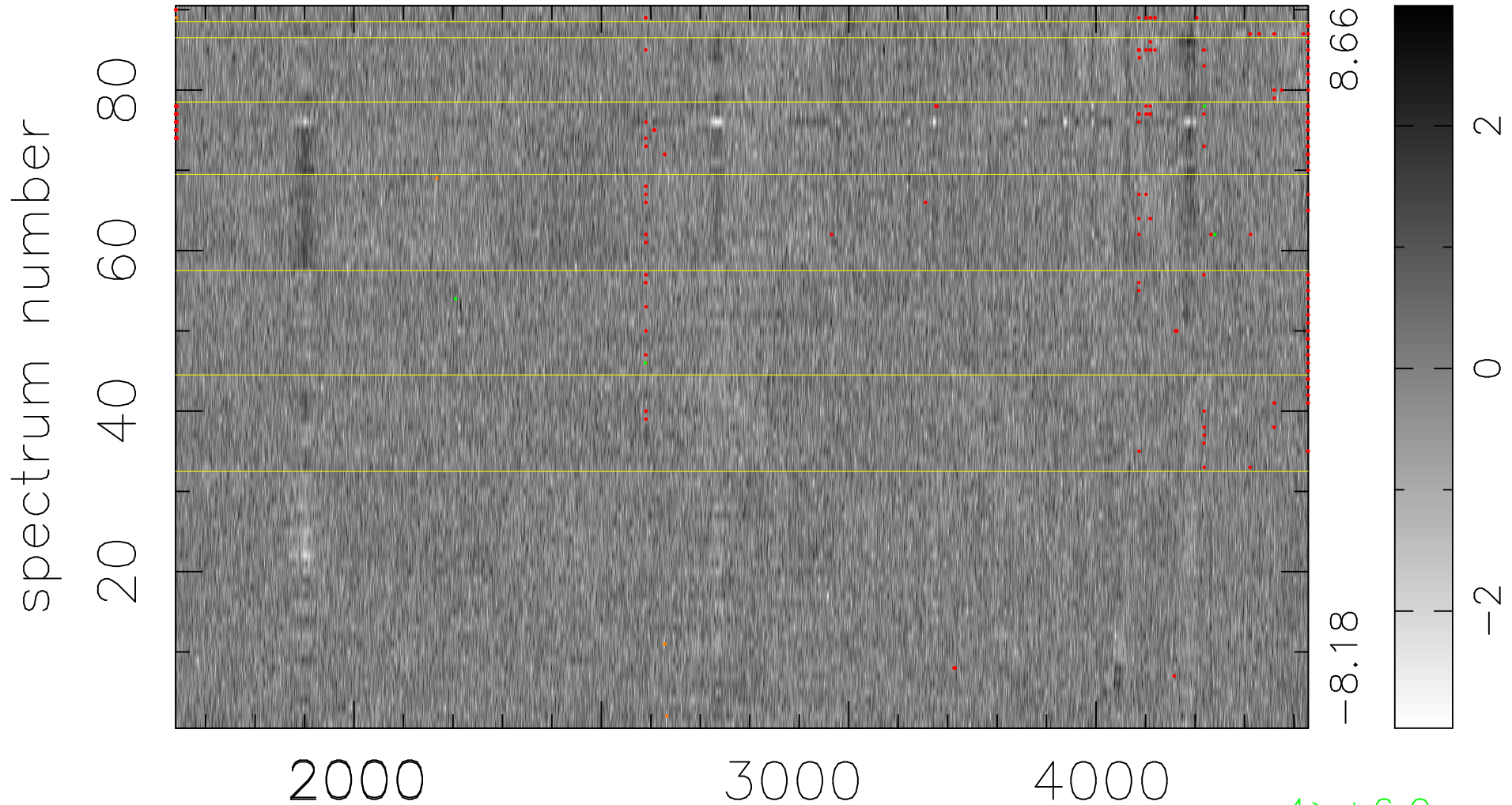


$$\chi(\lambda, t) = (\text{Data} - \text{Model } AC_5) / \sigma \chi$$

$$\chi^2 / (412200 - 4879) = 0.916 \Rightarrow 1.004$$

4580x90



bad:266=0.065% λ (Å) $z = 1.13069$

4 > +6.0σ

5 < -6.0σ