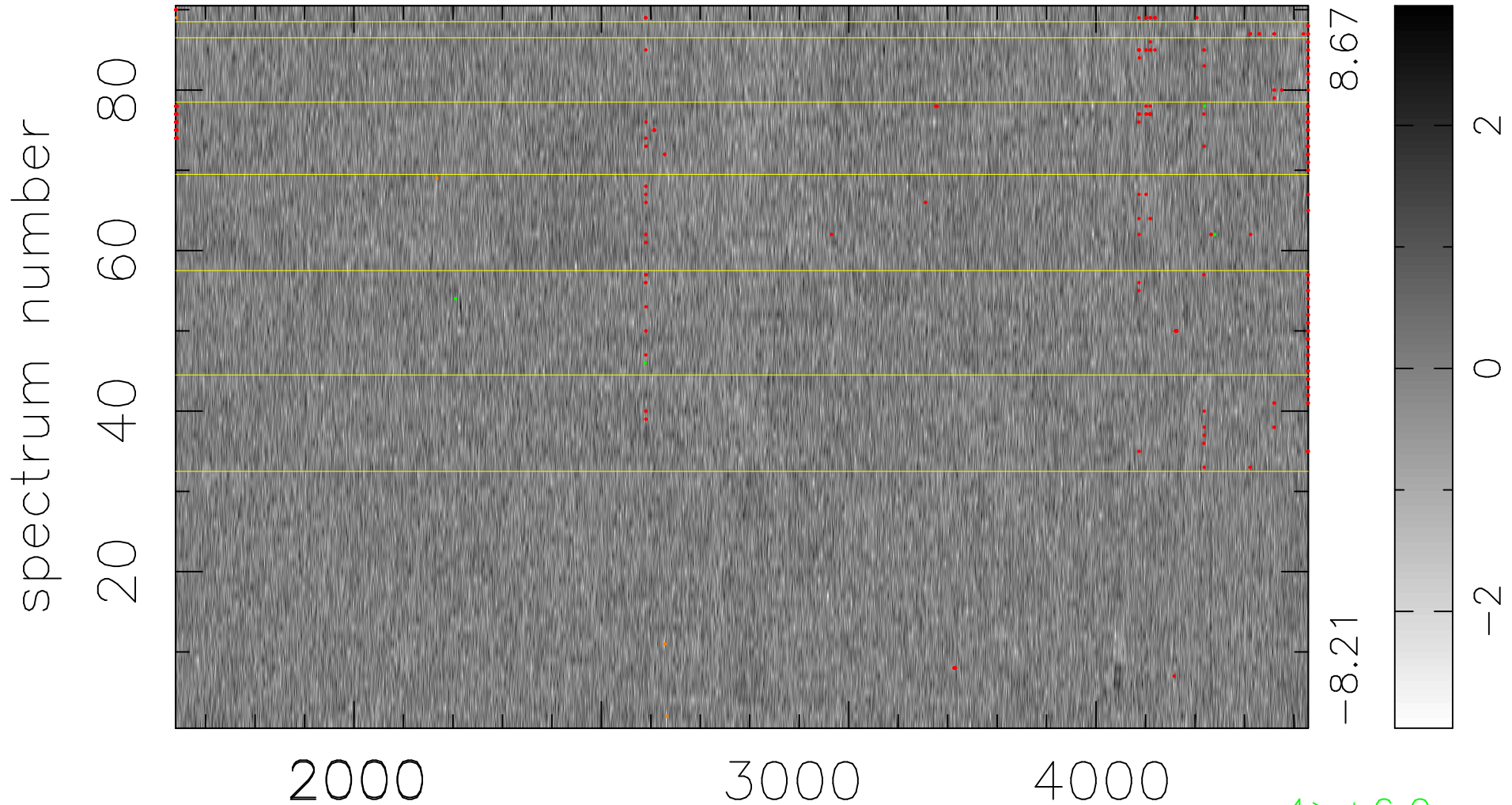


$$\chi(\lambda, t) = ( \text{Data} - \text{Model } \text{AC}_5\text{B}_3\text{F} ) / \sigma \chi$$

$$\chi^2 / (412200 - 5137) = 0.898 \Rightarrow 1.003$$

4580x90



bad:266=0.065%  $\lambda$  (Å)  $z = 1.13069$

4 > +6.0 $\sigma$

5 < -6.0 $\sigma$