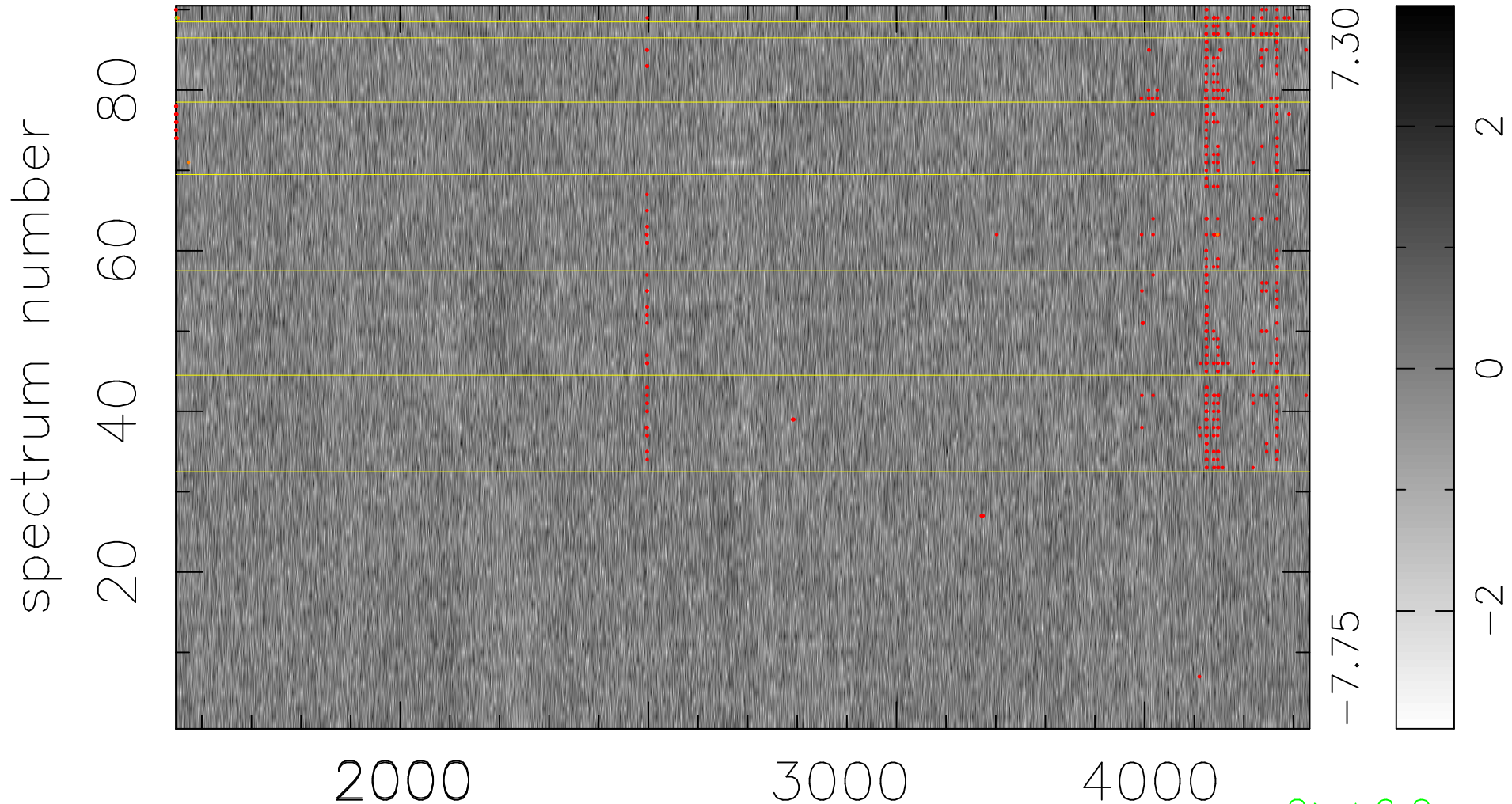


$$\chi(\lambda, t) = (\text{Data} - \text{Model } \text{AC}_5\text{B}_3\text{F}) / \sigma \chi$$

$$\chi^2 / (411390 - 5118) = 0.907 \Rightarrow 1.007$$

4571 × 90



bad:446=0.11%

λ (Å) $z = 1.22376$

2 > +6.0σ

5 < -6.0σ