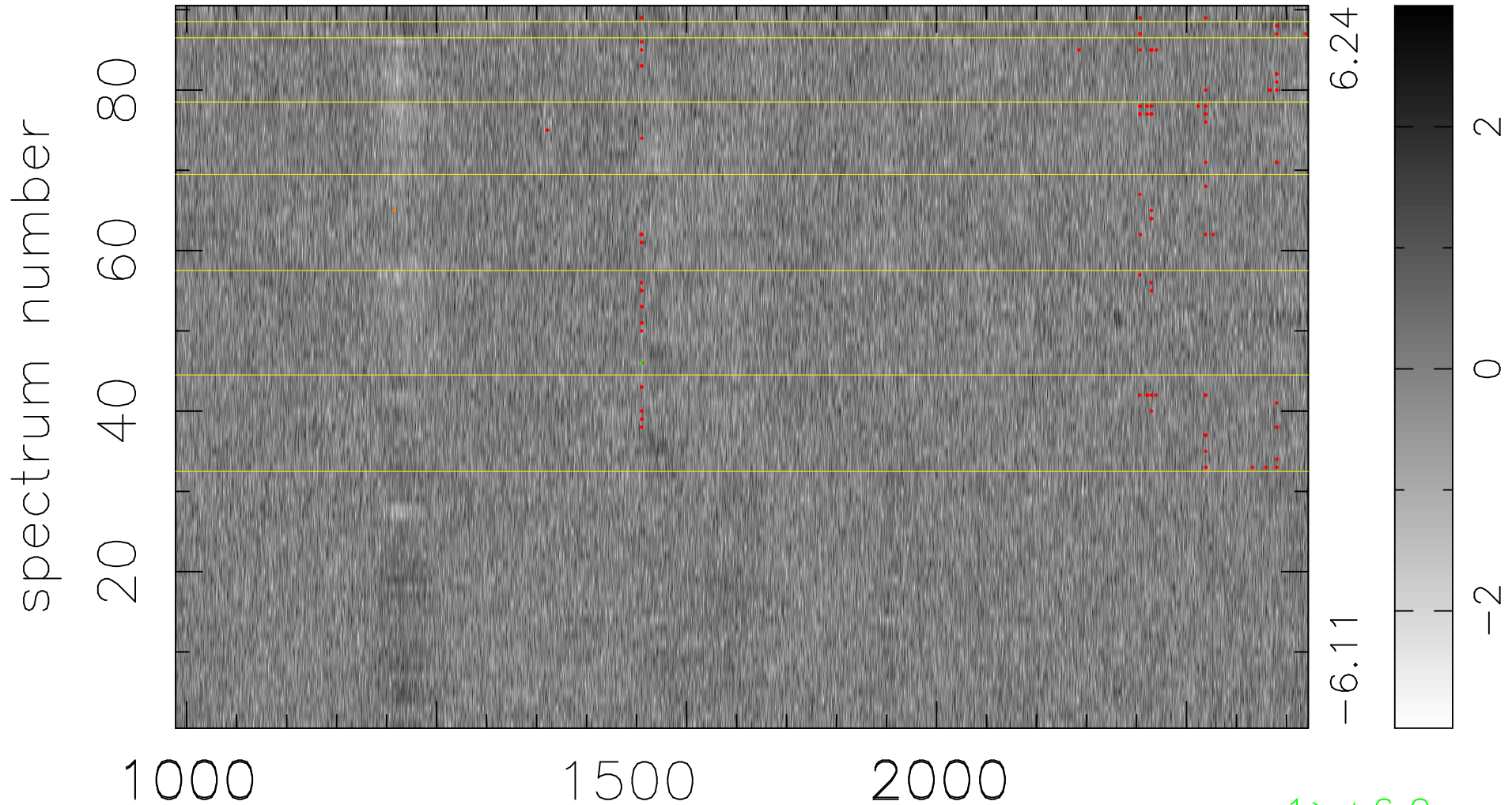


$$\chi(\lambda, t) = (\text{Data} - \text{Model AC}_5\text{F}) / \sigma \chi$$

$$\chi^2 / (407880 - 5290) = 0.897 \Rightarrow 1.007$$

4532x90



bad:110=0.027% λ (Å) $z = 2.66864$

1 > +6.0 σ

1 < -6.0 σ