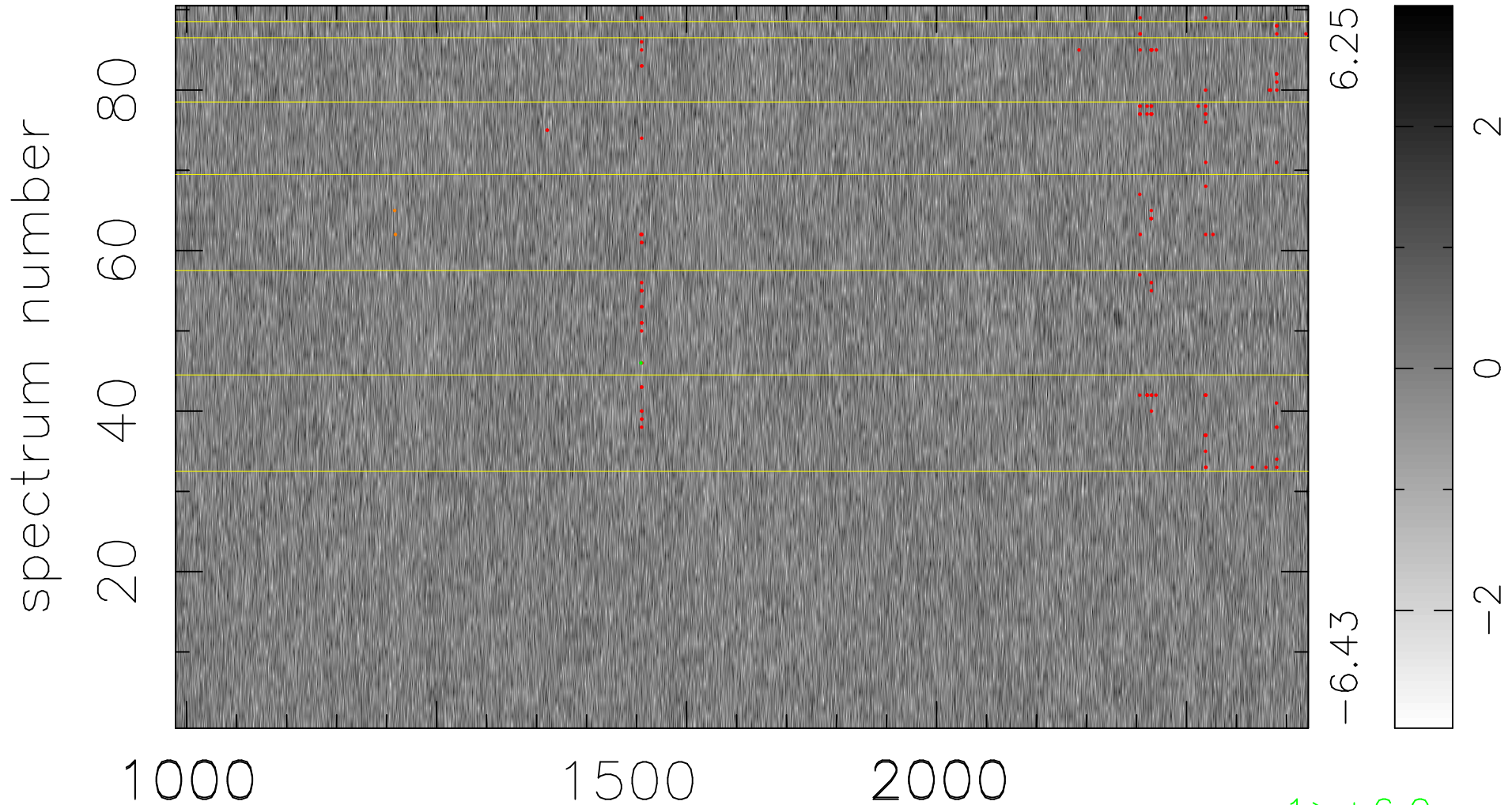


$$\chi(\lambda, t) = ( \text{Data} - \text{Model } \text{AC}_5\text{B}_7\text{F} ) / \sigma \chi$$

$$\chi^2 / (407880 - 5459) = 0.887 \Rightarrow 1.008$$

4532x90



bad:110=0.027%  $\lambda$  (Å)  $z = 2.66864$

1 > +6.0 $\sigma$

2 < -6.0 $\sigma$