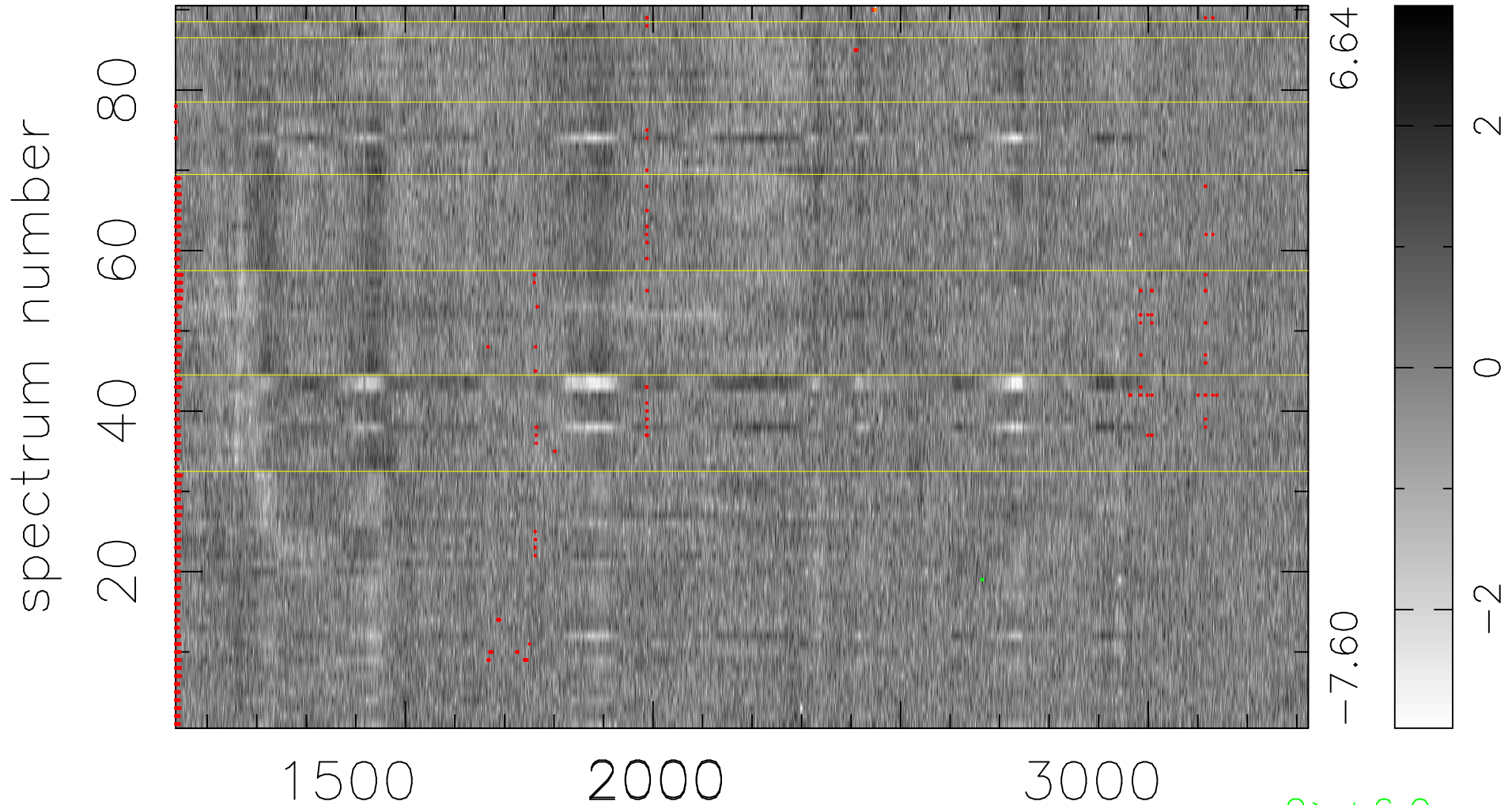


$$\chi(\lambda, t) = (\text{Data} - \text{Model AC}_5\text{F}) / \sigma \chi$$

$$\chi^2 / (411750 - 5148) = 1.002 \Rightarrow 1.009$$

4575x90



bad:1346=0.33% λ (Å) $z = 1.81173$

2 > +6.0 σ

4 < -6.0 σ