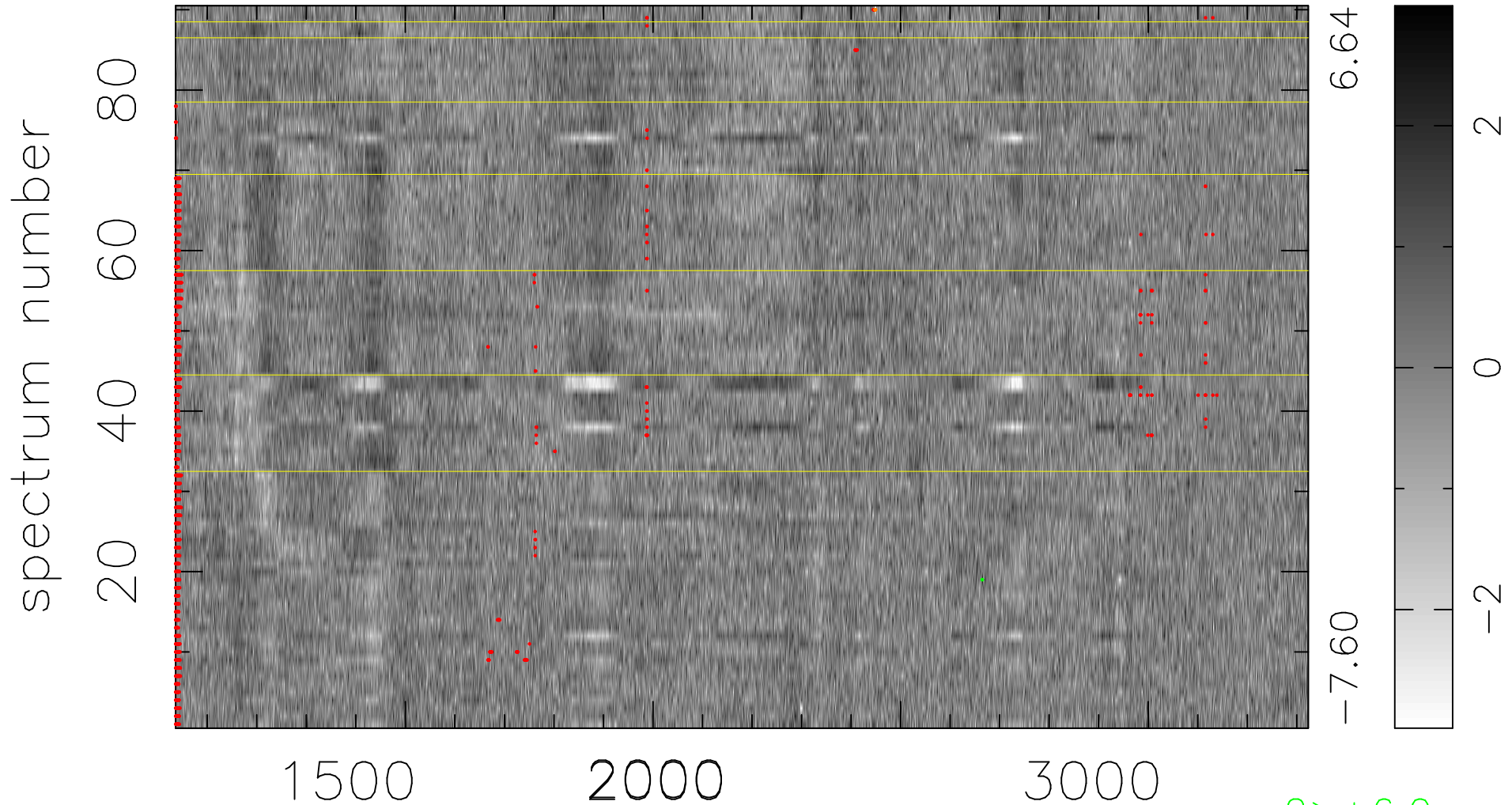


$$\chi(\lambda,t) = (\text{Data} - \text{Model } AC_5) / \sigma \chi$$

$$\chi^2 / (411750 - 5058) = 1.003 \Rightarrow 1.009$$

4575x90



bad:1346=0.33% λ (Å) $z = 1.81173$

2 > +6.0 σ

4 < -6.0 σ