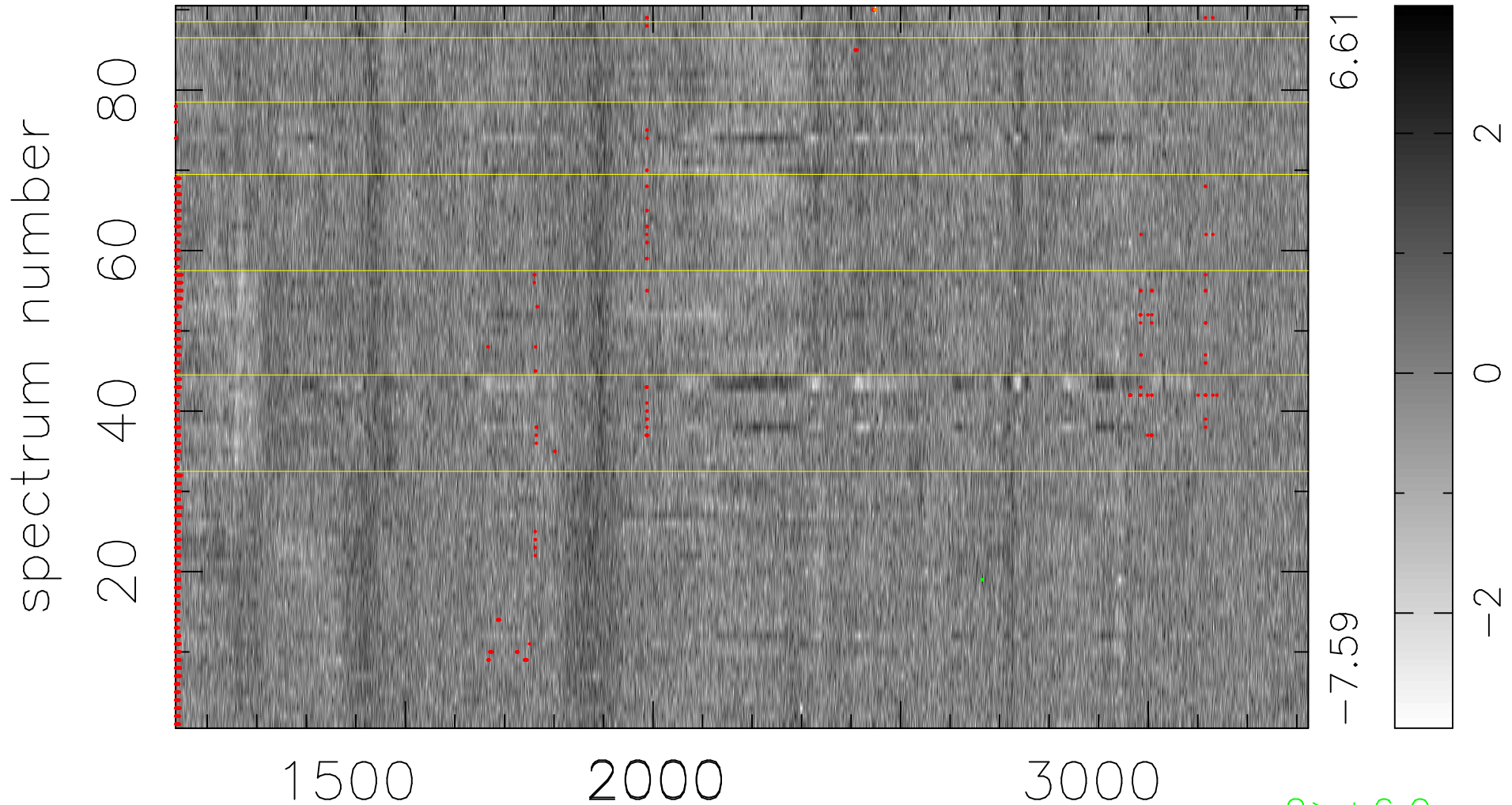


$$\chi(\lambda, t) = ( \text{Data} - \text{Model } \text{AC}_5\text{B}_5\text{F} ) / \sigma \chi$$

$$\chi^2 / (411750 - 5265) = 0.932 \Rightarrow 1.019$$

4575x90



bad:1346=0.33%  $\lambda$  (Å)  $z = 1.81173$

2 > +6.0σ

4 < -6.0σ