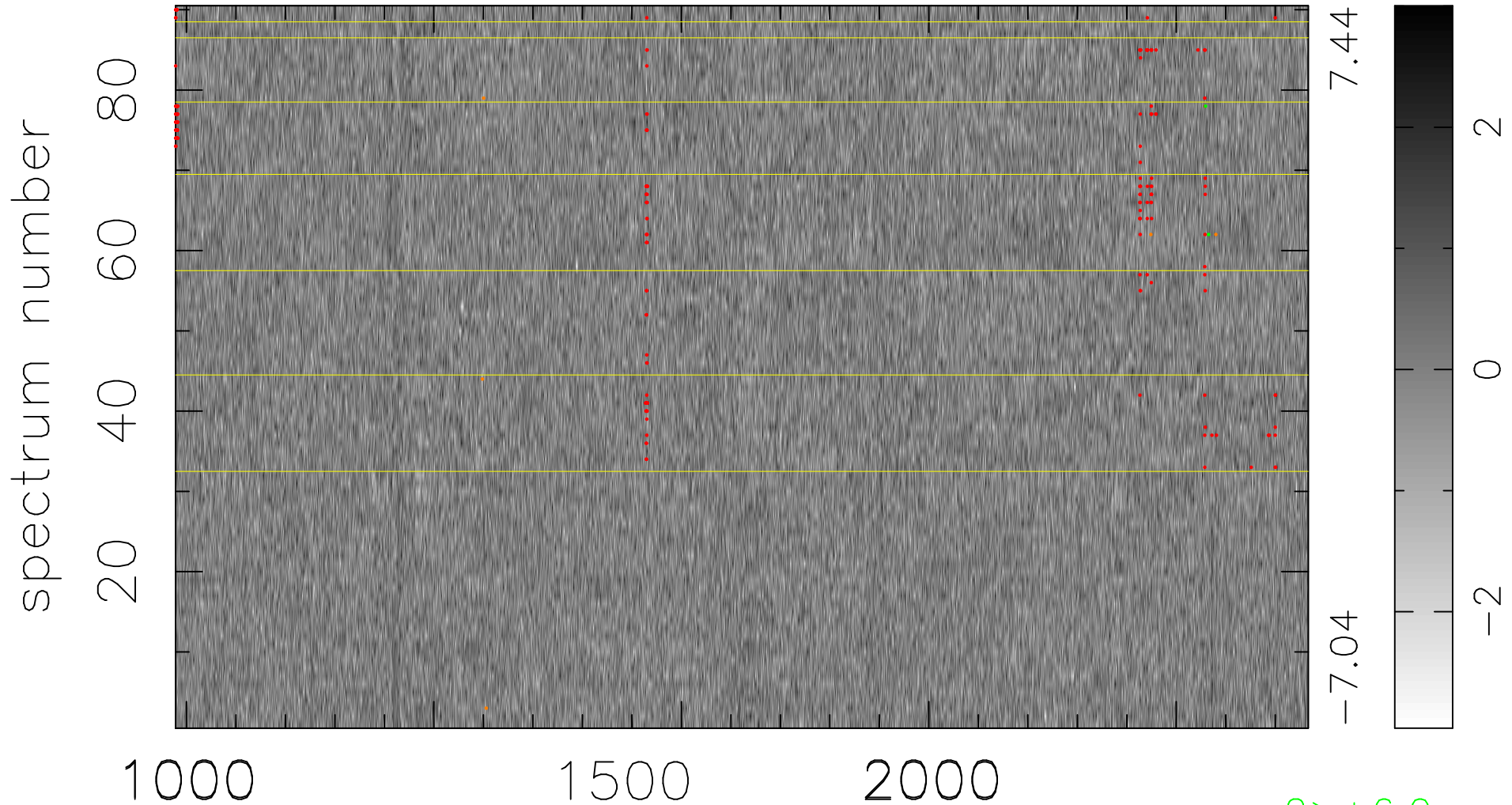


$$\chi(\lambda, t) = (\text{Data} - \text{Model AC}_5\text{B}_7\text{F}) / \sigma \chi$$

$$\chi^2 / (412020 - 5521) = 0.917 \Rightarrow 1.007$$

4578x90



bad:205=0.050% λ (Å) $z = 2.63479$

2 > +6.0 σ

5 < -6.0 σ