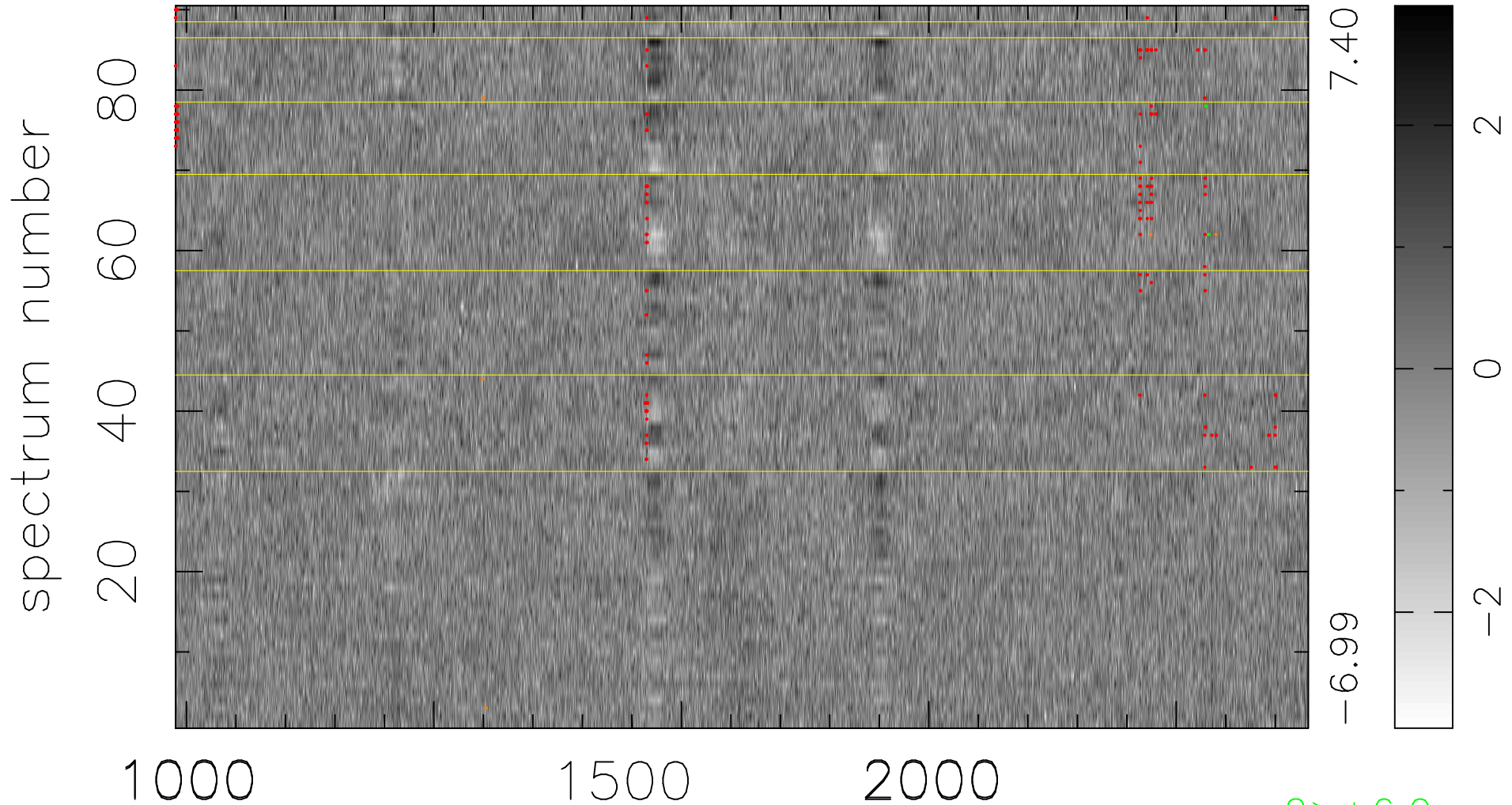


$$\chi(\lambda, t) = ( \text{Data} - \text{Model AC}_5\text{F} ) / \sigma \chi$$

$$\chi^2 / (412020 - 5340) = 0.950 \Rightarrow 1.002$$

4578x90



bad:205=0.050%  $\lambda$  ( $\text{\AA}$ )  $z = 2.63479$

2 > +6.0 $\sigma$

5 < -6.0 $\sigma$