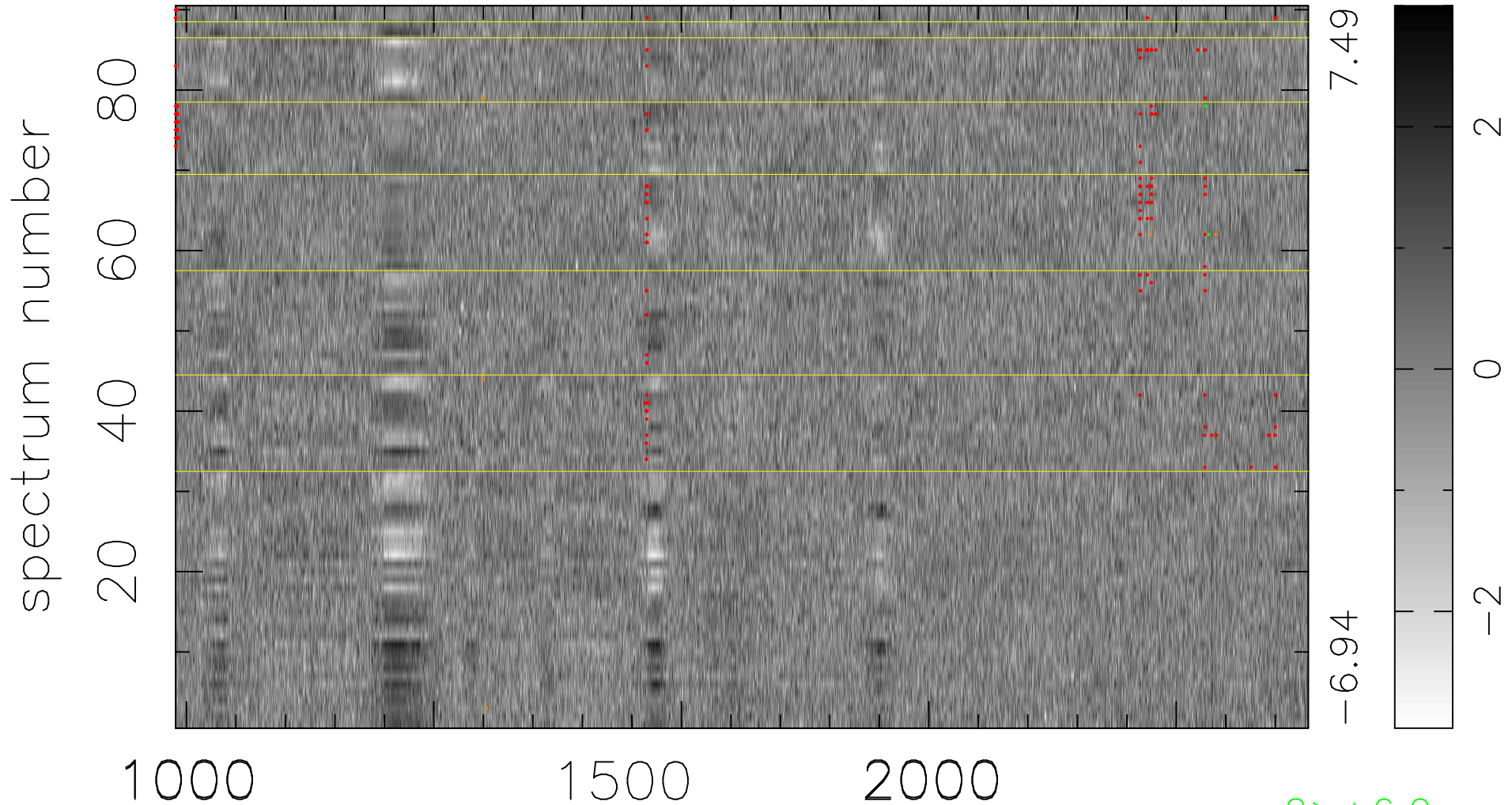


$$\chi(\lambda,t) = ( \text{Data} - \text{Model } AC_5 ) / \sigma \chi$$

$$\chi^2 / (412020 - 5250) = 1.142 \Rightarrow 1.007$$

4578x90



bad:205=0.050%  $\lambda$  (Å)  $z = 2.63479$

2 > +6.0 $\sigma$

5 < -6.0 $\sigma$