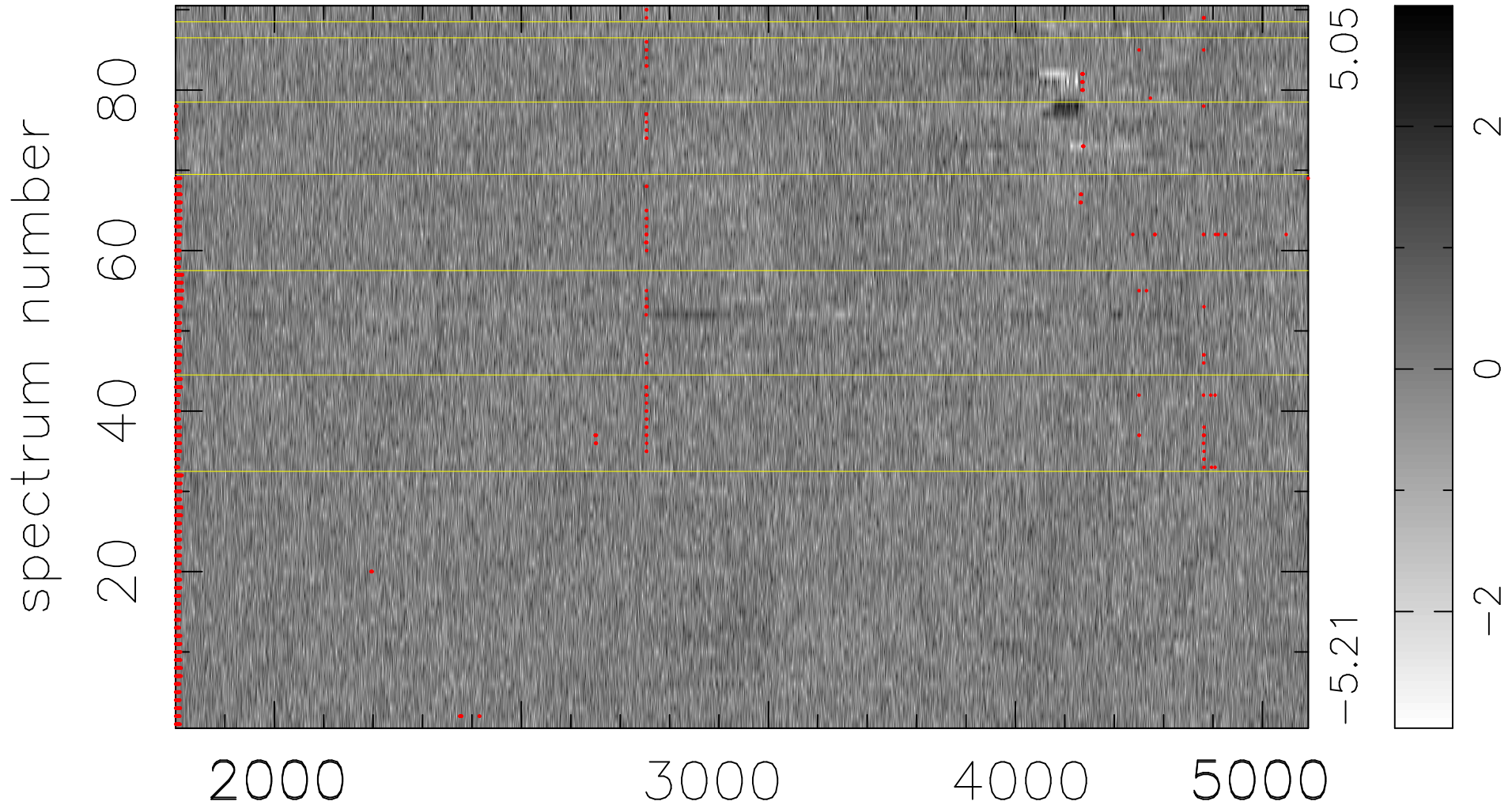


$$\chi(\lambda, t) = (\text{Data} - \text{Model } \text{AC}_5\text{B}_4\text{F}) / \sigma \chi$$

$$\chi^2 / (412740 - 5213) = 0.909 \Rightarrow 1.007$$

4586x90



bad:1561=0.38% λ (Å) $z = 0.97634$