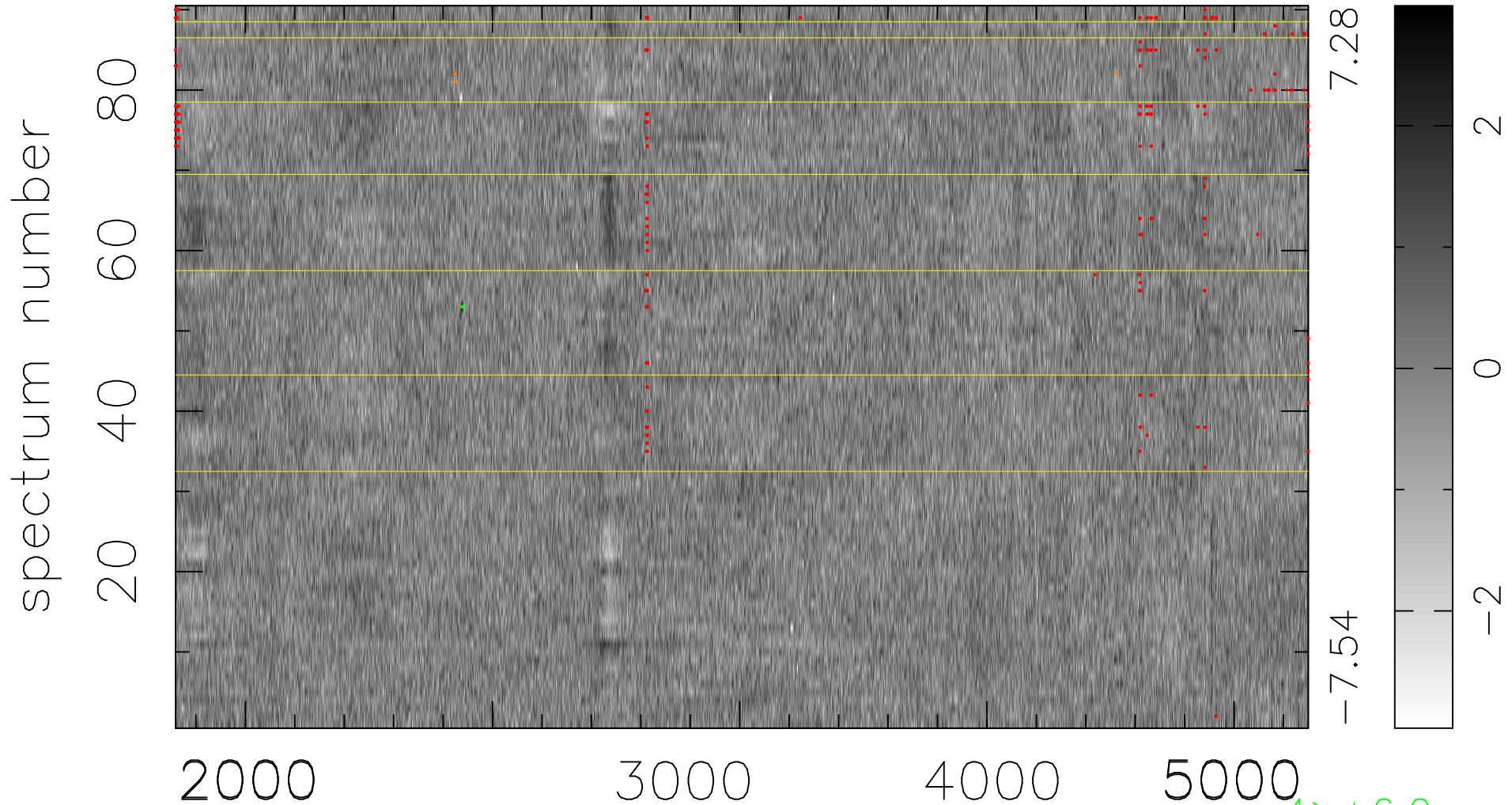


$$\chi(\lambda,t) = ( \text{Data} - \text{Model } AC_5 ) / \sigma \chi$$

$$\chi^2 / (412470 - 4971) = 0.911 \Rightarrow 1.005$$

4583x90



bad:296=0.072%  $\lambda$  (Å)  $z = 0.92306$

4 > +6.0 $\sigma$

4 < -6.0 $\sigma$