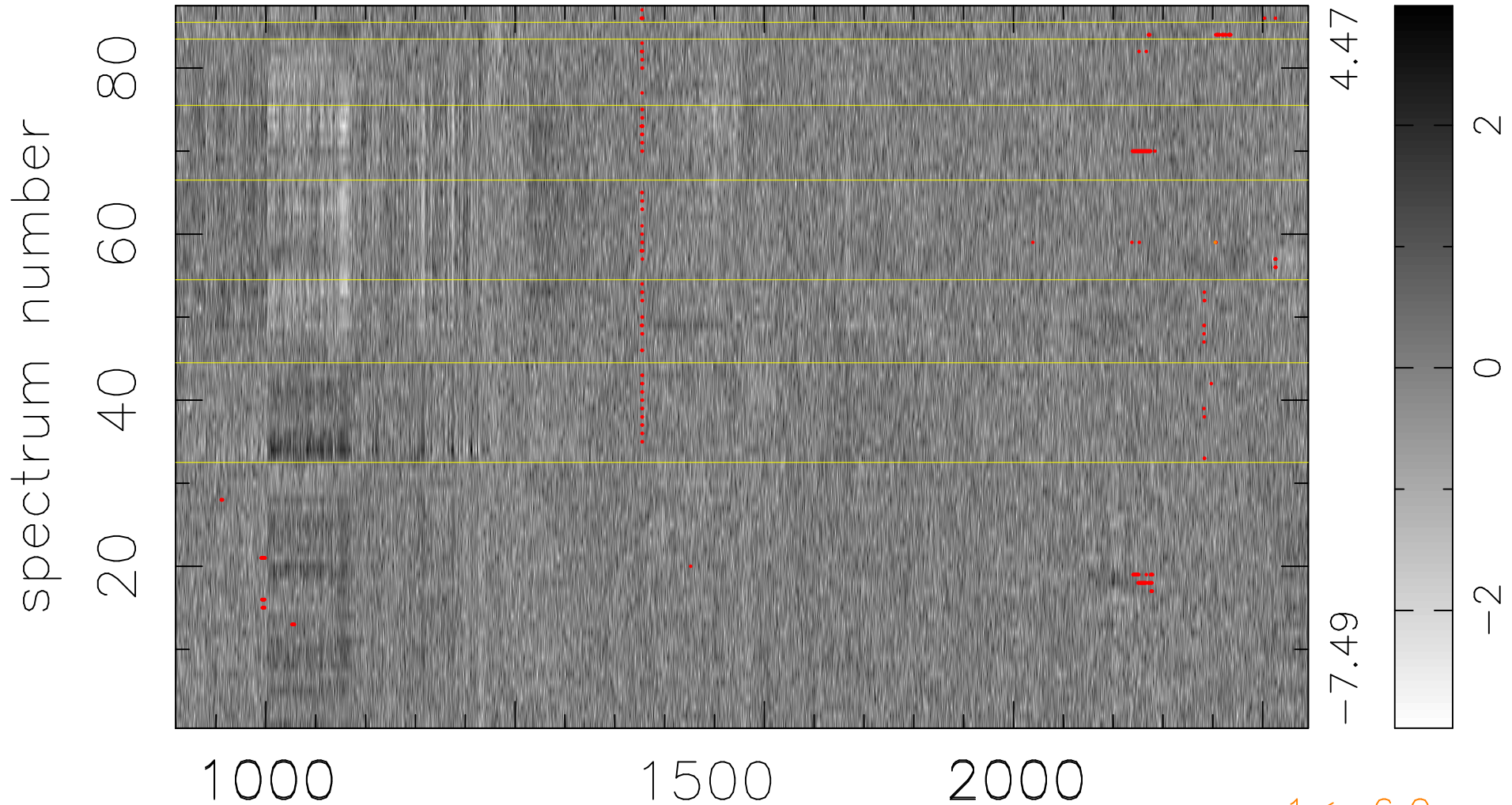


$$\chi(\lambda, t) = (\text{Data} - \text{Model } \text{AC}_5\text{B}_6\text{F}) / \sigma \chi$$

$$\chi^2 / (395502 - 5386) = 0.970 \Rightarrow 1.006$$

4546x87



$1 < -6.0\sigma$

bad:368=0.093% λ (Å) $z = 2.94030$