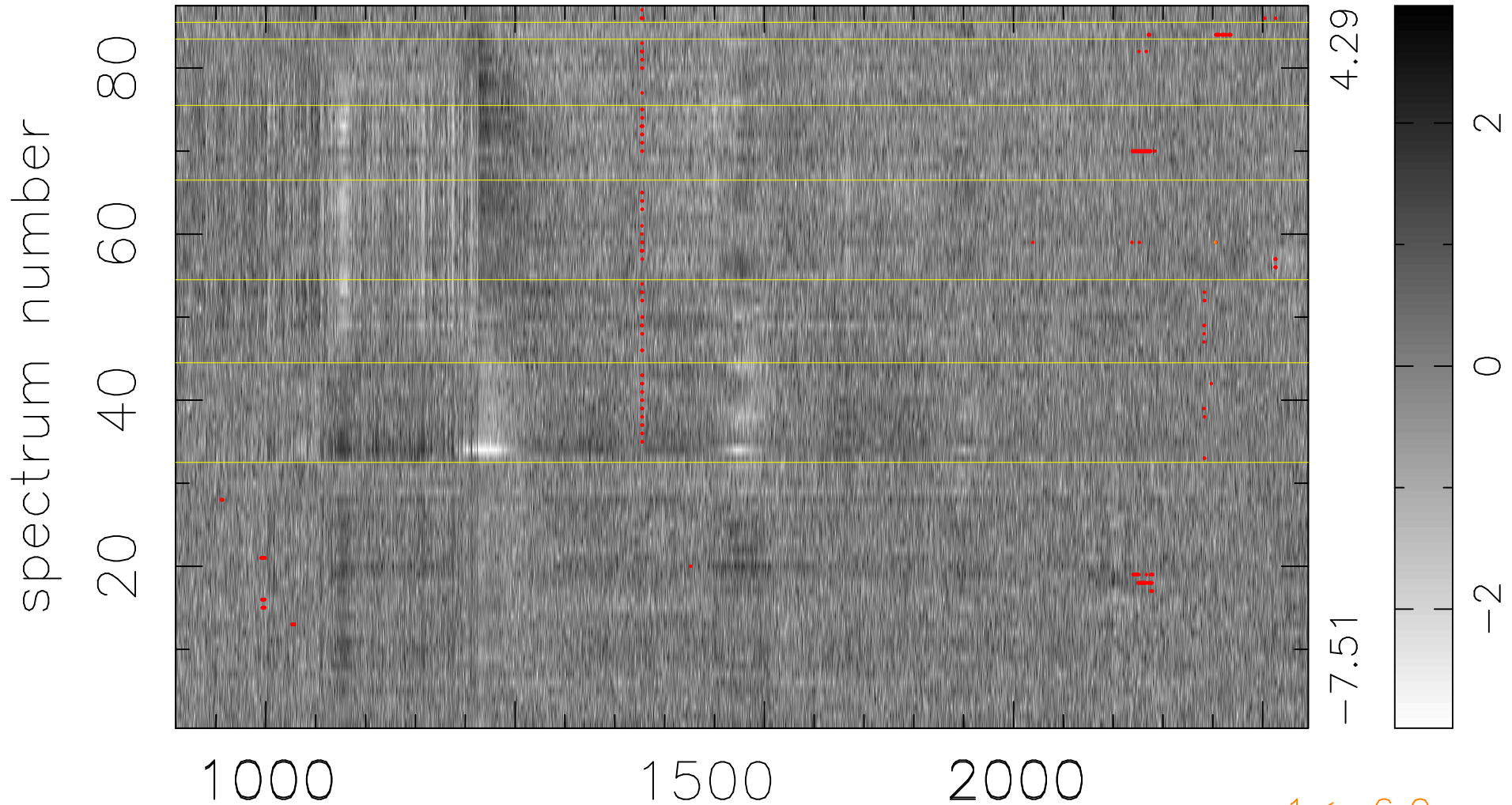


$$\chi(\lambda, t) = ( \text{Data} - \text{Model AC}_5\text{F} ) / \sigma \chi$$

$$\chi^2 / (395502 - 5194) = 1.034 \Rightarrow 1.004$$

4546x87



$1 < -6.0\sigma$

bad:368=0.093%  $\lambda$  (Å)  $z = 2.94030$