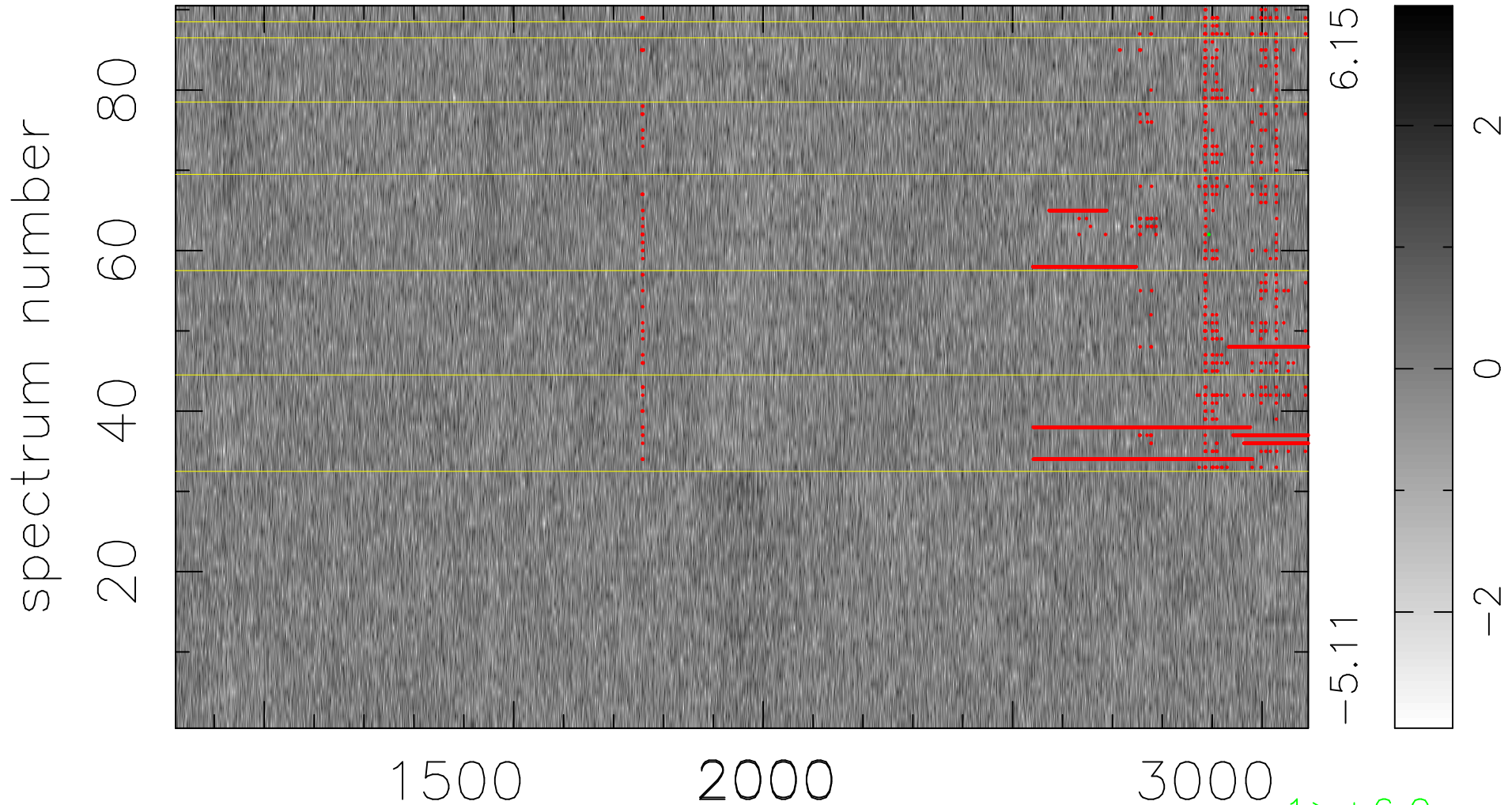


$$\chi(\lambda, t) = ( \text{Data} - \text{Model AC}_5\text{F} ) / \sigma \chi$$

$$\chi^2 / (408690 - 5294) = 0.889 \Rightarrow 1.007$$

4541 × 90



6.15  
-5.11

2  
0  
-2

1 > +6.0σ

bad:3849=0.94%    λ (Å)    z = 2.12467