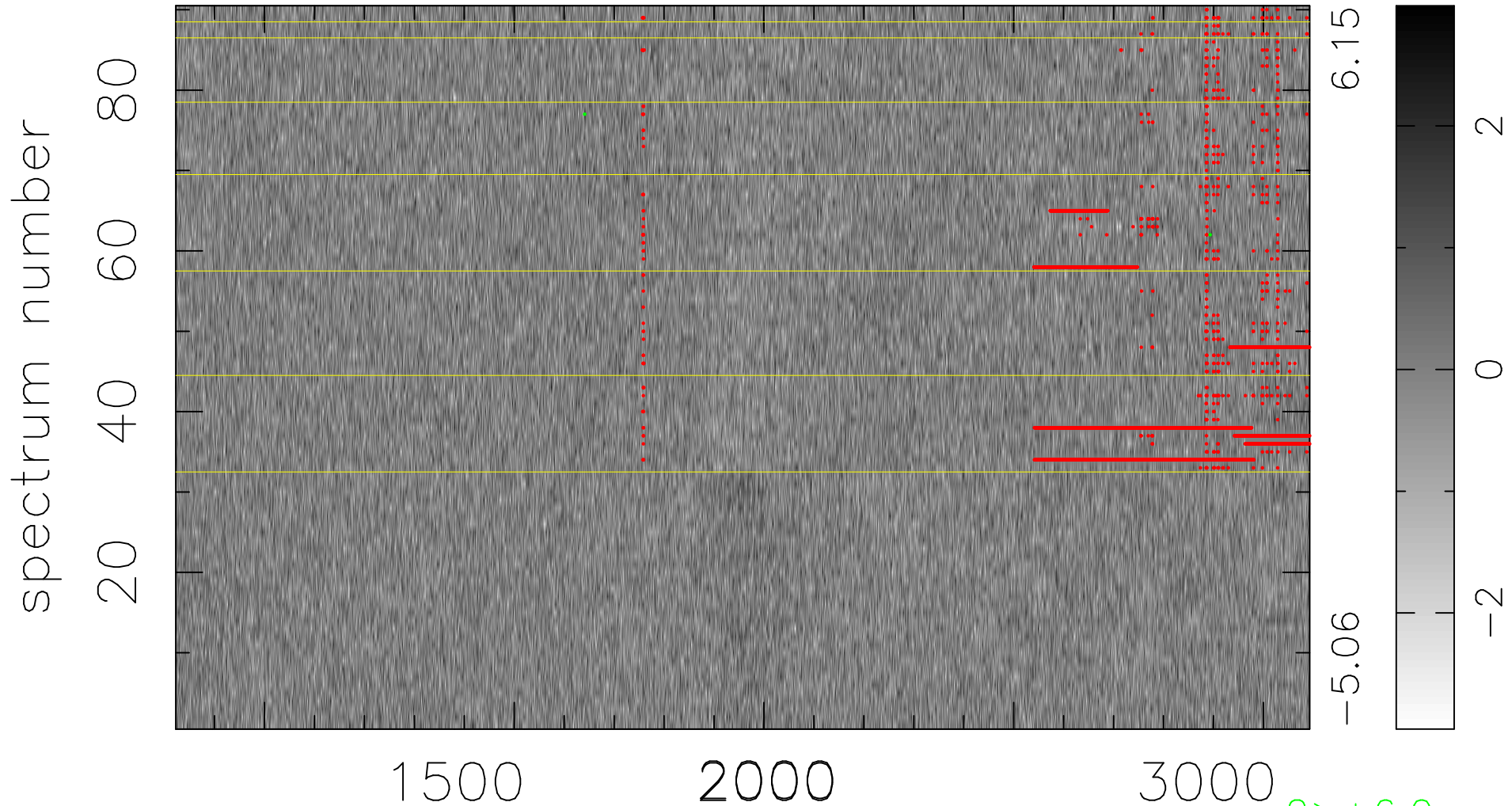


$$\chi(\lambda, t) = (\text{Data} - \text{Model } \text{AC}_5\text{B}_7\text{F}) / \sigma \chi$$

$$\chi^2 / (408690 - 5471) = 0.886 \Rightarrow 1.008$$

4541 × 90



bad:3849=0.94% λ (Å) $z = 2.12467$