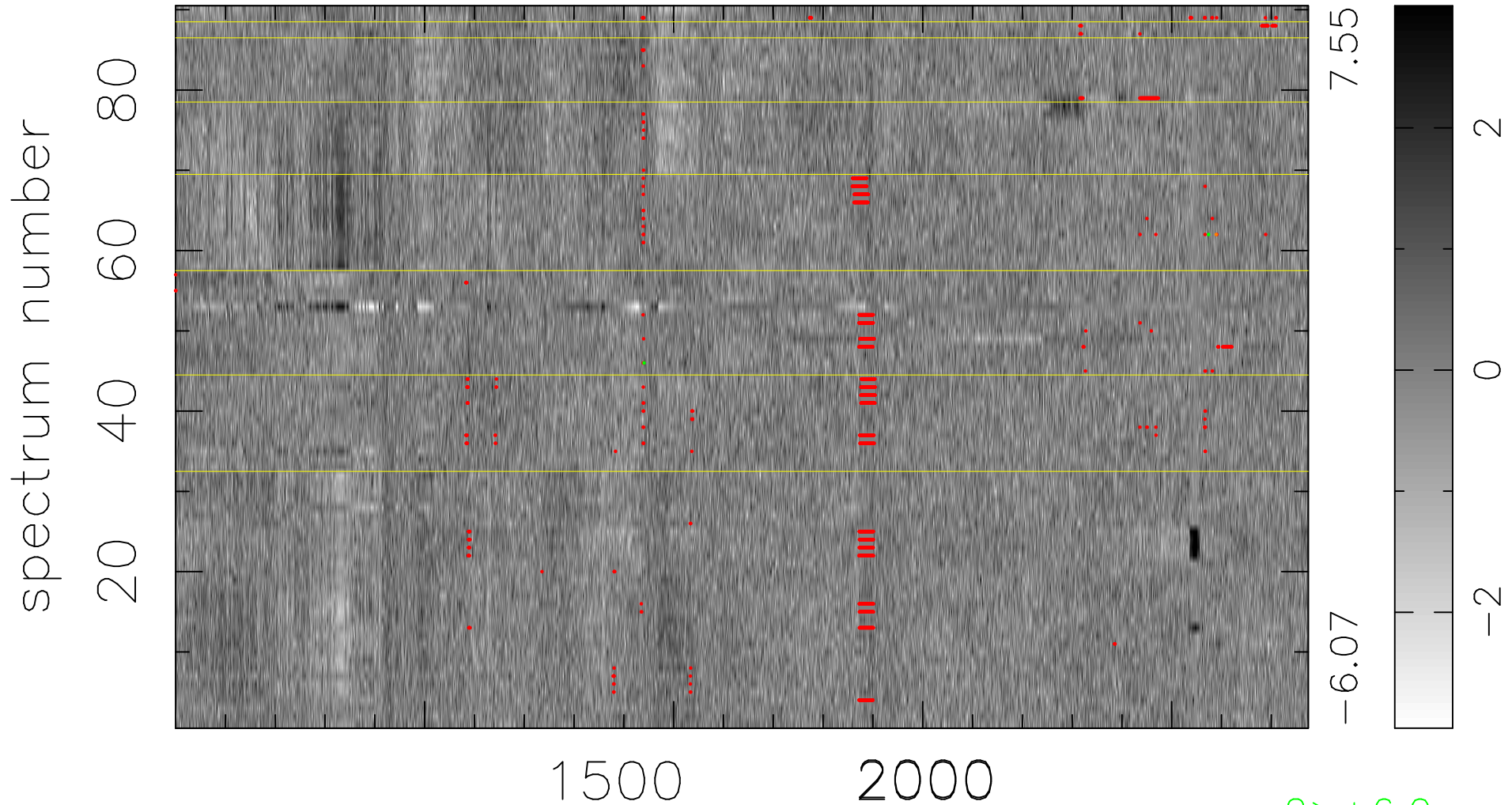


$$\chi(\lambda, t) = ( \text{Data} - \text{Model } \text{AC}_5\text{B}_7\text{F} ) / \sigma \chi$$

$$\chi^2 / (409410 - 5460) = 1.140 \Rightarrow 1.009$$

4549 × 90



bad:1628=0.40%     $\lambda$  (Å)     $z = 2.61985$

2 > +6.0σ

1 < -6.0σ