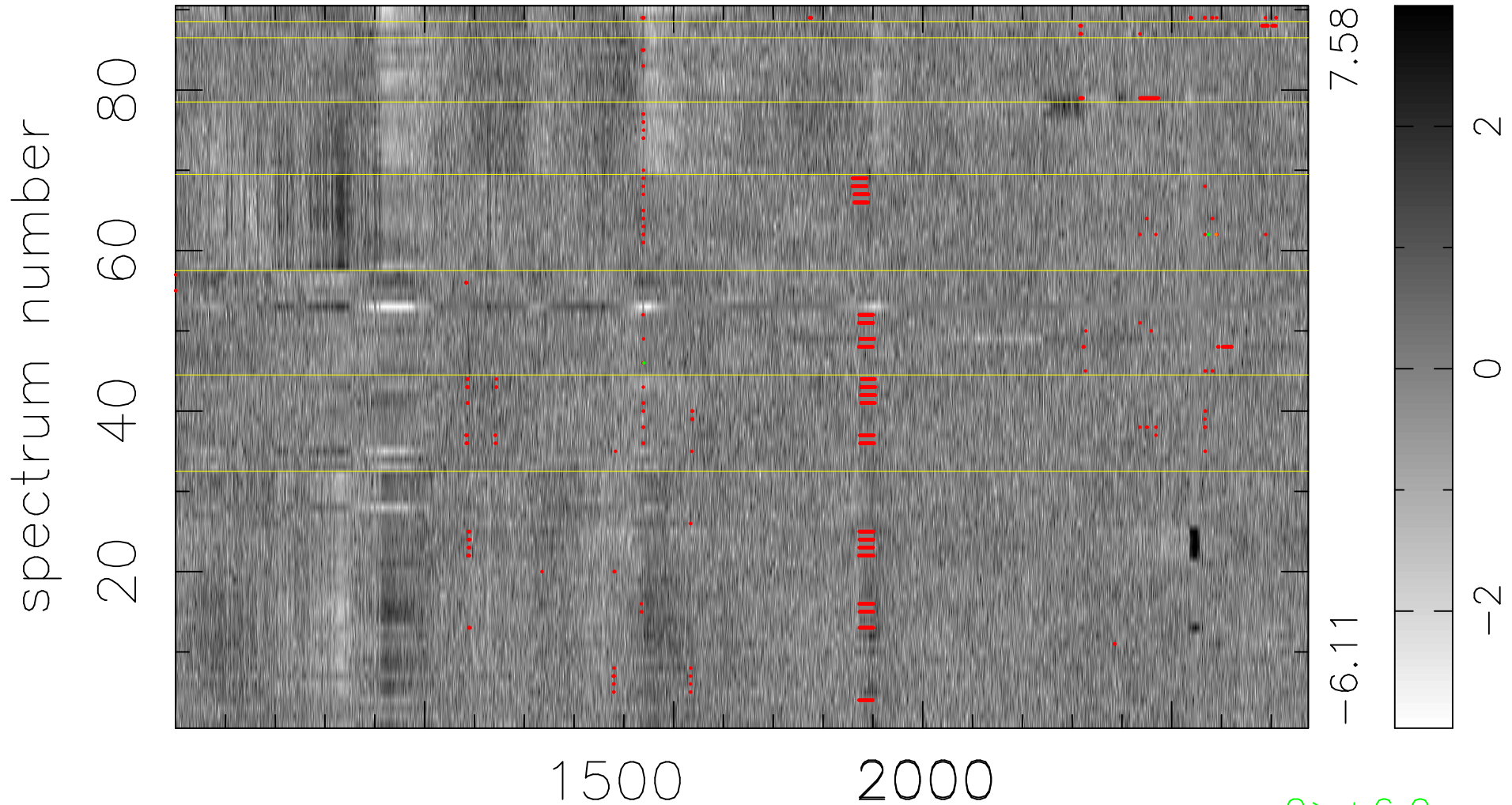


$$\chi(\lambda, t) = (\text{Data} - \text{Model } AC_5) / \sigma \chi$$

$$\chi^2 / (409410 - 5239) = 1.439 \Rightarrow 1.008$$

4549 × 90



bad:1628=0.40% λ (Å) $z = 2.61985$

2 > +6.0σ
1 < -6.0σ