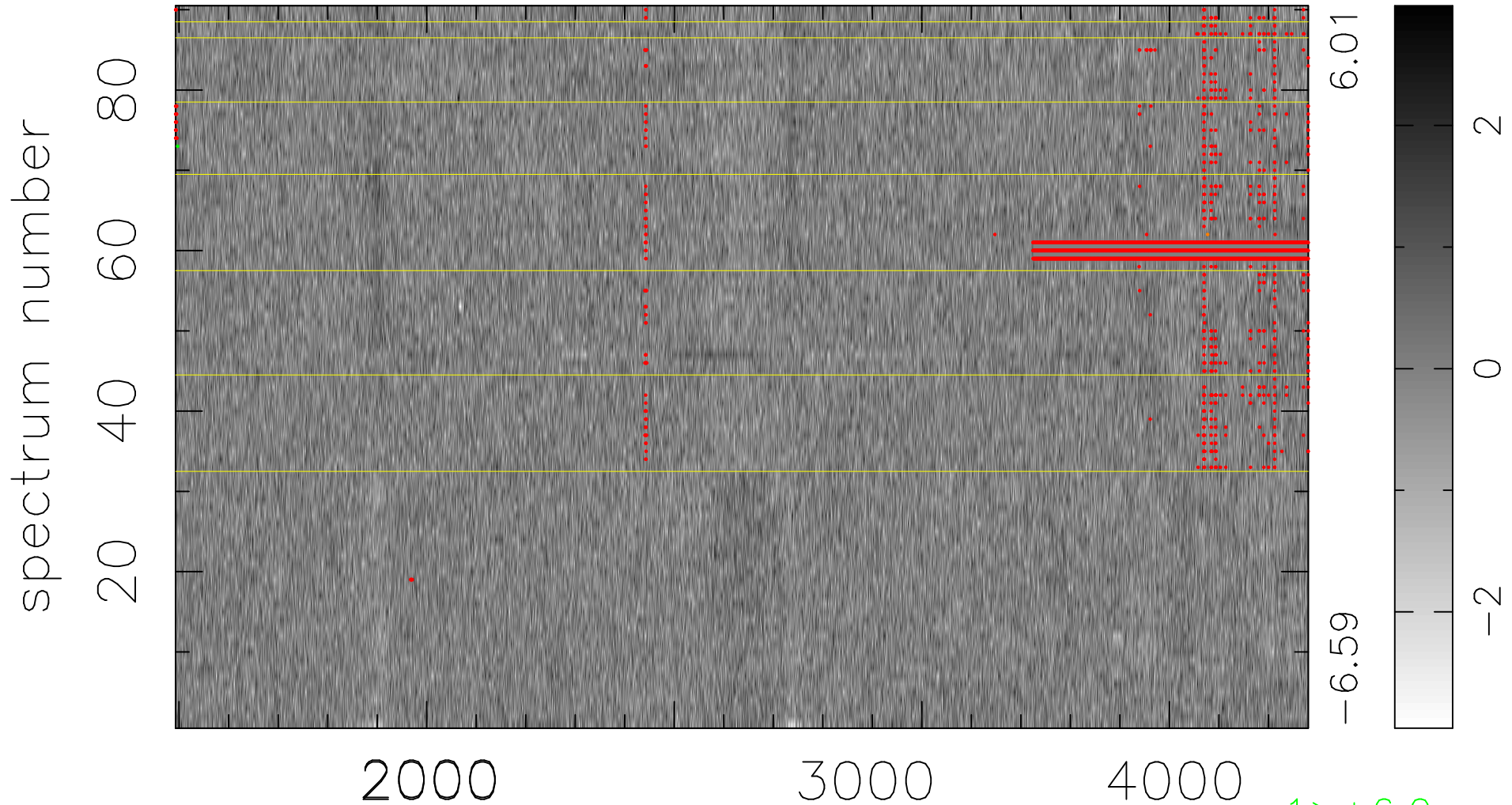


$$\chi(\lambda, t) = (\text{Data} - \text{Model AC}_5\text{F}) / \sigma \chi$$

$$\chi^2 / (411840 - 4955) = 0.904 \Rightarrow 1.007$$

4576 × 90



6.01

-6.59

2

0

-2

1 > +6.0σ

1 < -6.0σ

bad:3989=0.97% λ (Å) z = 1.28030