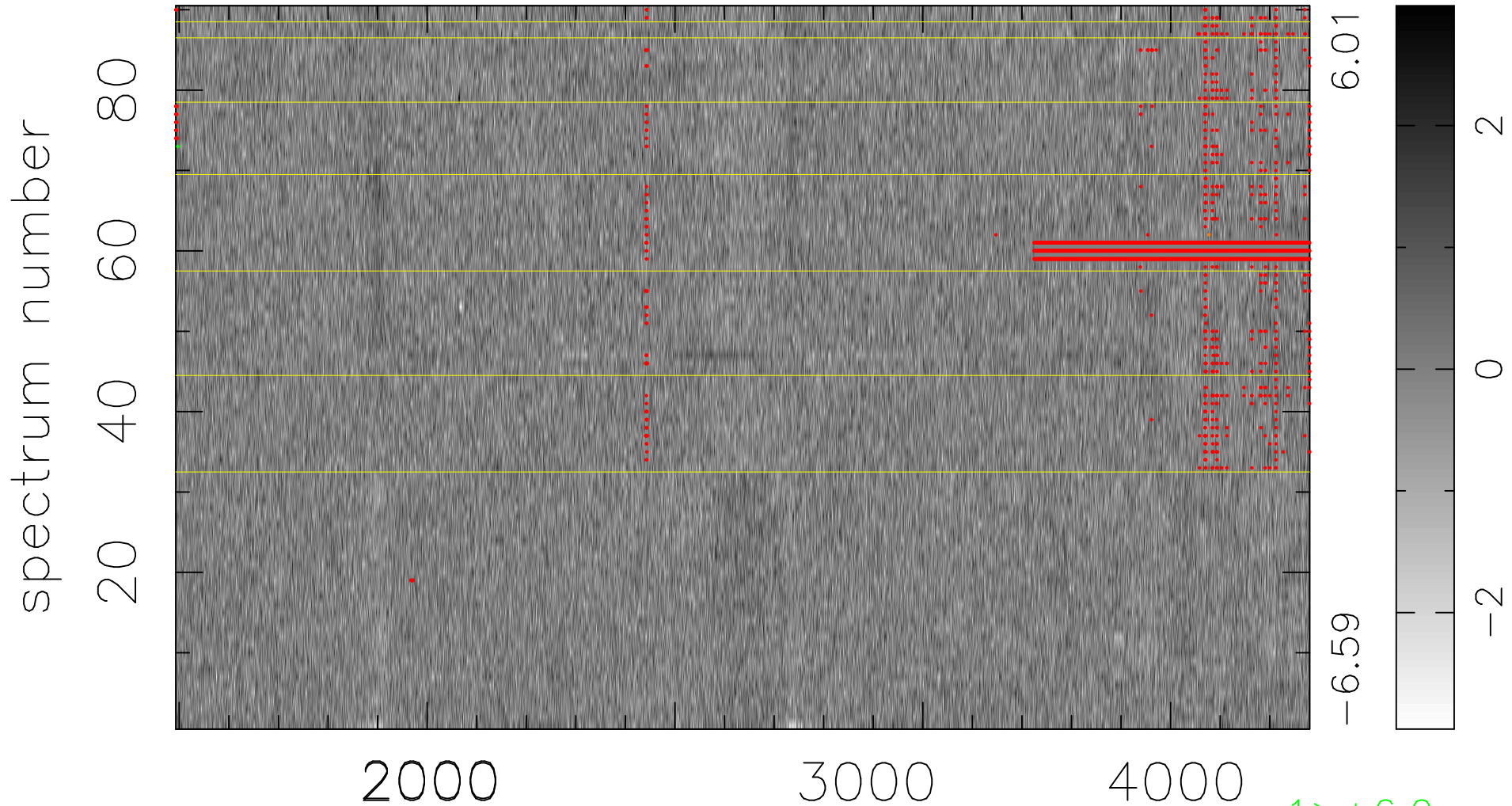


$$\chi(\lambda,t) = (\text{Data} - \text{Model } AC_5) / \sigma \chi$$

$$\chi^2 / (411840 - 4865) = 0.904 \Rightarrow 1.007$$

4576x90



bad:3989=0.97% λ (Å) $z = 1.28030$

1 > +6.0σ

1 < -6.0σ