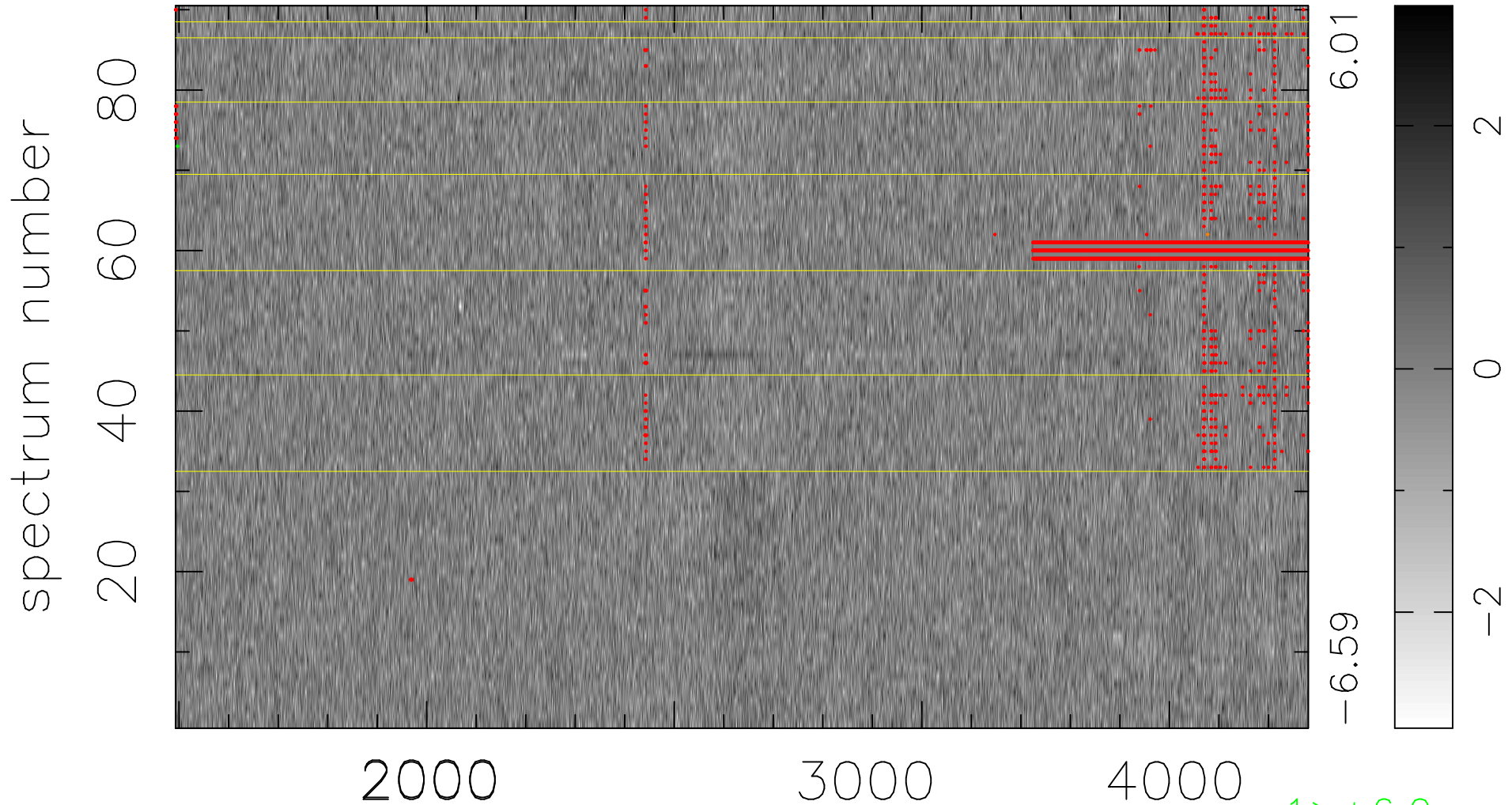


$$\chi(\lambda, t) = (\text{Data} - \text{Model } \text{AC}_5\text{B}_3\text{F}) / \sigma \chi$$

$$\chi^2 / (411840 - 5127) = 0.901 \Rightarrow 1.007$$

4576x90



bad:3989=0.97% λ (Å) $z = 1.28030$

1 > +6.0σ
1 < -6.0σ