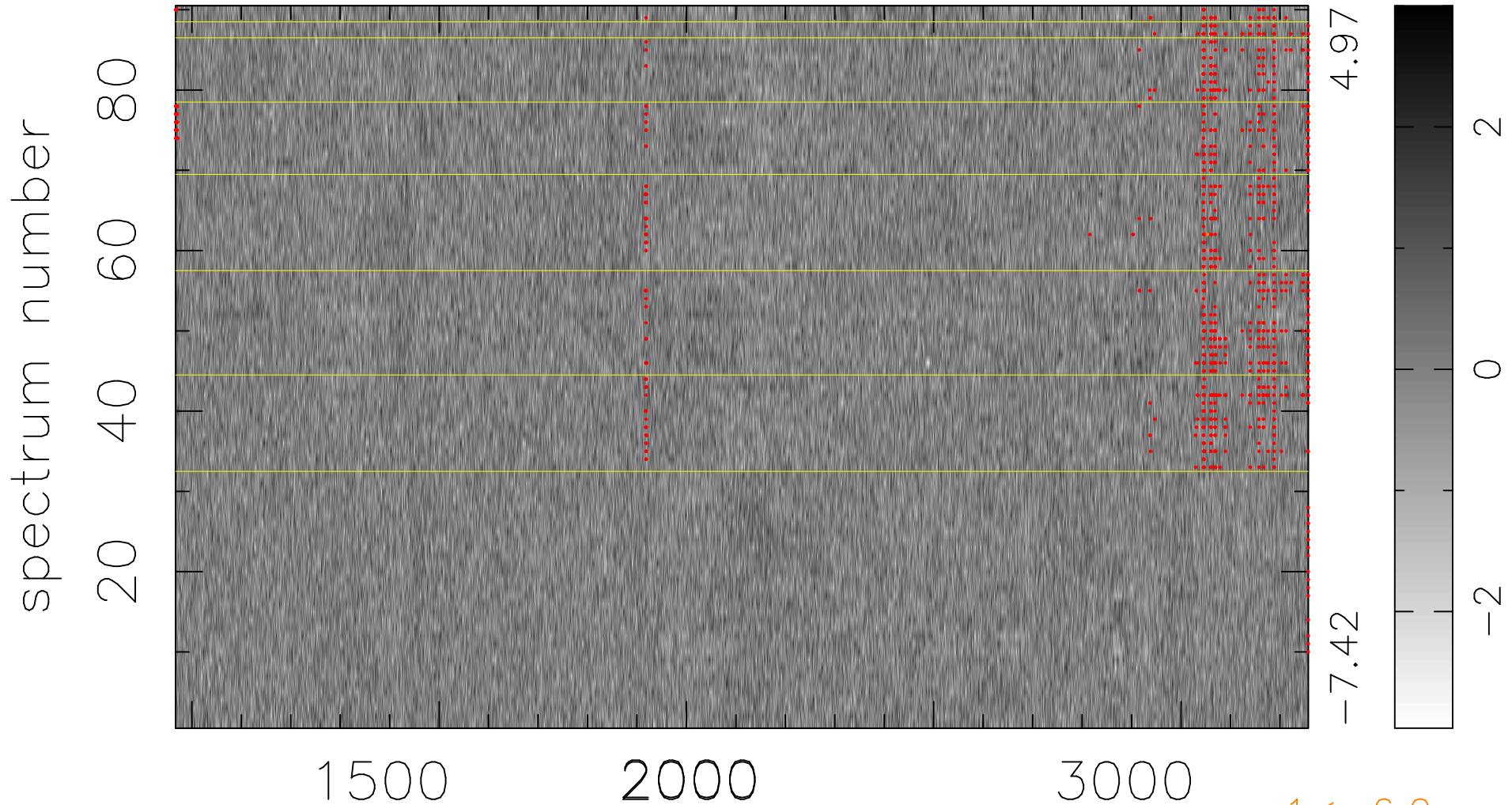


$$\chi(\lambda, t) = ( \text{Data} - \text{Model } \text{AC}_5\text{B}_6\text{F} ) / \sigma \chi$$

$$\chi^2 / (412290 - 5388) = 0.885 \Rightarrow 1.008$$

4581 × 90



$1 < -6.0\sigma$

bad:877=0.21%     $\lambda$  (Å)     $z = 1.90304$