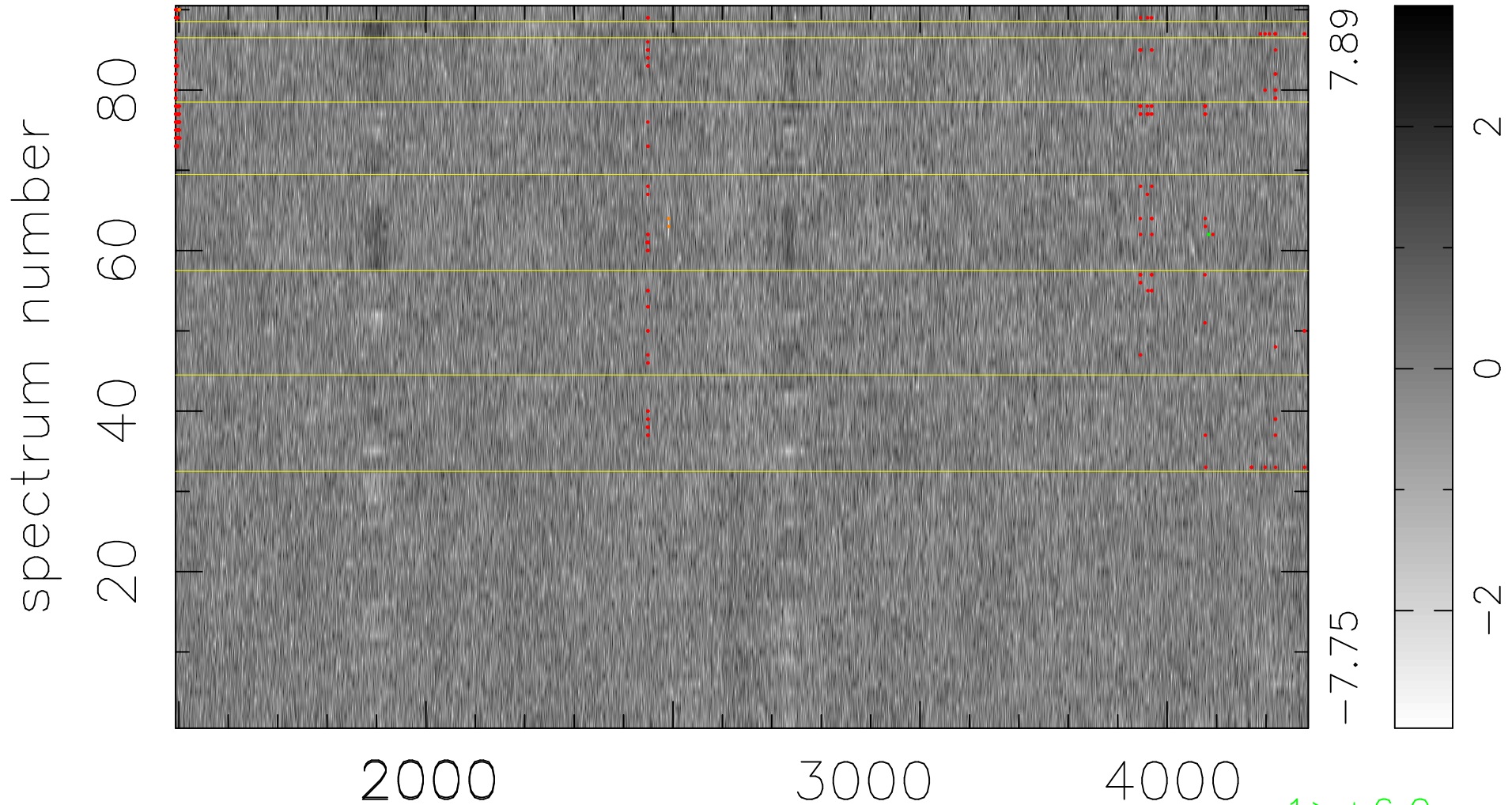


$$\chi(\lambda, t) = (\text{Data} - \text{Model AC}_5\text{F}) / \sigma \chi$$

$$\chi^2 / (412650 - 4970) = 0.908 \Rightarrow 1.007$$

4585x90



bad:271=0.066% λ (Å) $z = 1.27351$

1 > +6.0σ
3 < -6.0σ