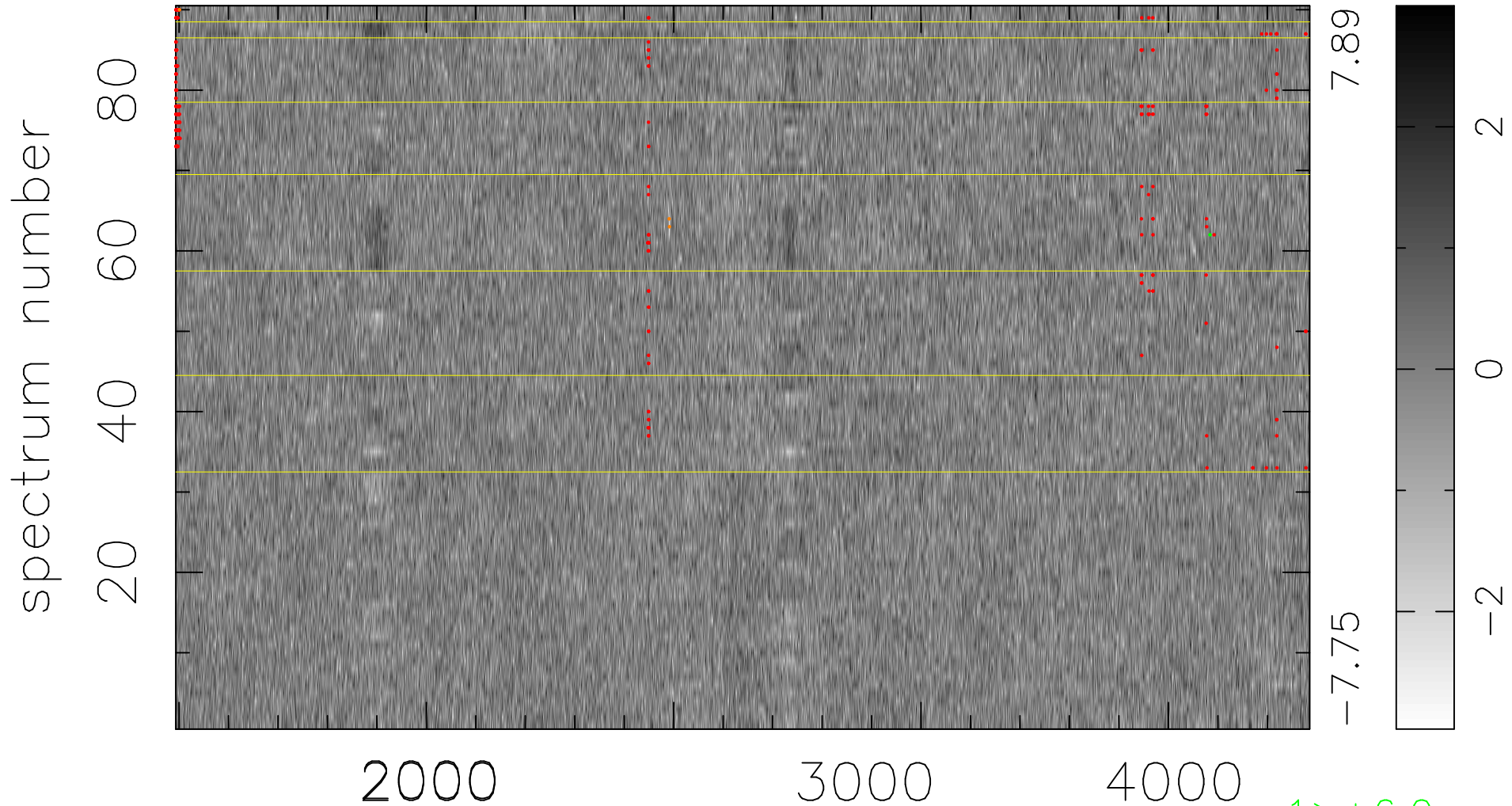


$$\chi(\lambda, t) = ( \text{Data} - \text{Model } AC_5 ) / \sigma \chi$$

$$\chi^2 / (412650 - 4880) = 0.908 \Rightarrow 1.007$$

4585x90



7.89  
-7.75

2  
0  
-2

1 > +6.0σ

3 < -6.0σ

bad:271=0.066% λ (Å) z = 1.27351